

CI

CEDRUS INTERNATIONAL ®™ CI

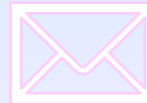
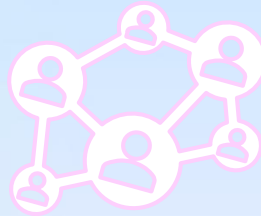
Design is intelligence made visible



CLICKABLE PORTFOLIO

CI

Look for the clickable elements in the file to ease your exploration



& MORE



BRIEFED CLICKABLE SUMMARY

CI

Please click the diamonds for fast moves



CI the Brand



Why CI



CI in KSA



Services



Clients



Joint Ventures



Offices



Restaurants



Banks



Cinemas and Theaters



Booths



Please Click for More ...



BRIEFED CLICKABLE SUMMARY

CI

Please click the diamonds for fast moves



3D Immersive Screens



CI Offices Achieved Projects



CI Restaurants Achieved Projects



Ongoing Projects



Futuristic Concept Designs



CI Quality & HSE Policy



CI'S DETAILS

CI

LETS
SURF

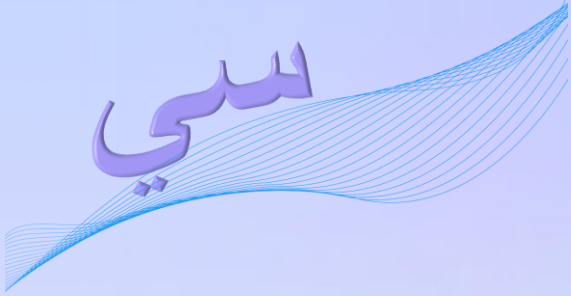


enter and be welcome

never
elloough
Architecture.



CI THE BRAND



CI

- ❖ Premium international brand specialized in the interior design and fit-out contracting industry along with corporate furniture supplies, Cedrus International CI is a growth partner. We're a nimble, and results-driven firm. We execute with purpose and focus on measurable, actionable results
- ❖ CI is also an excellent Architectural Consultancy and Project Management Brand
- ❖ CI has executive interior design studios mainly in Europe, and the USA 
- ❖ CEDRUS INTERNATIONAL ®™ CI – A New Era of Interior Design & Fit-Out | PM & Consultancy | Full Turn-Key Solutions – ***Saudi Arabia's Legal Entity is within the brand authorization given to CI's Subsidiaries in Riyadh***



FEATURED

- ❖ The Florida & Caribbean Design & Honor Awards
- ❖ Number 19 among the best 50 interior design companies in the Middle East
- ❖ Among the best 19 interior design companies in the Kingdom of Saudi Arabia
- ❖ In Covet House
- ❖ Top 20 Interior Designers in Riyadh (Pinterest)
- ❖ And more...






WHY CI?

CI

Quality, Transcendence, and On-time Delivery are Fundamental Slogans at CI

- Simply because we want you to be different. We want your organization to look perfect; as a result, we seek PERFECTION. CI ensures superior premium quality products and services in the interior design and fit-out industry. We acknowledge that the quality of a product can be measured in terms of performance, reliability, and durability. Therefore, we ensure the finest quality in every contract journey. Every single project we will be working on will be labeled « CI », nevertheless, we will make sure to manifest your identity through quality excellence 

Rabih Ela - CI's Founder



CI'S KSA MISSION

CI



CI'S OPERATIONS IN SAUDI ARABIA



- ▼ We, Cedrus International CI, with our HQ in New York and ID FO QM studios in Paris and LA, are working closely with partners in the Middle East and the GCC to raise the interior design and fit-out quality. We are making sure that these designated companies will apply very high standards in their work and that's why they have been selected as CI's associates. Our PQ process, which is continuously examined by Perry Johnson Registrars in London, is very firm so all our selections are trustworthy.
- ▼ We are very proud to have VIP clients in the Kingdom of Saudi Arabia and we are achieving excellent results with our acquaintances. We care about your connection which will help us on our shared mission of connecting the world's professionals, especially in the interior design industry, to make all of us more productive and successful toward achieving the 2030 Vision together. We are delighted about that participation.



CI'S BASICS IN THE FOLLOWING 4

CI



QUALITY FIRST

CI

❖ Our fit-out specialists have a track record like no other consultants. From the biggest, most complex corporate headquarters to national retail roll-outs to the small but vital projects that help keep businesses competitive, for decades we have delivered fit out construction on time, on budget and to an exceptional level of quality. We achieve this success for our customers with sound processes and proven delivery methods, driven by our fast-paced and agile culture



DYNAMIC DELIVERY

CI

❖ Our years spent working alongside businesses and consultants to address complex building and space challenges means we understand not only what constitutes great delivery, but also what makes a great delivery dynamic. Quite simply, we don't believe in a means to an end. We believe in the open communication and collaboration that underpins strong relationships and creates enriching customer journeys

“

*We all have stories to tell
and so should the design
that surrounds us*

”



ABSOLUTE COMPLETION

CI

- Fit-out delivery often falls down at the final hurdle – an industry reality we are committed to changing. By working to engage earlier in the procurement process and remaining involved in the project long after its handover, we can ensure seamless and effective delivery with the smoothest possible transition to the end-user. We promise absolute completion, and we make sure we get it every time

Architecture
is the thoughtful
making of
space.



ALWAYS CARE

CI

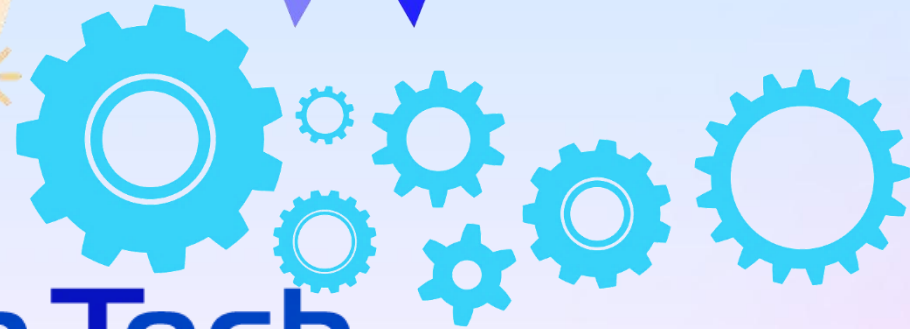
- ❖ We are committed to building stronger, deeper, more productive relationships with our customers. 'Always care' is a core value for CI people and so we've taken the traditional notion of aftercare and evolved this into a trusted and long-term service built on a deep understanding of our customers. Bridging the gap between fit-out and facilities management, our specialists deliver 'anytime-anywhere' projects to support our customers' constantly changing business needs

“Great design starts with paper, pencil, and good communication.”



SERVICES

CI



High Tech
Solution



SERVICES' BRIEF

CI

- ✔ You can count on CI for anything related to architecture, façade design, landscape, interior design, fit-out, furniture, exhibition spaces, smart systems, 3D immersive technology, and all related works
- ✔ We provide a full turn-key solution



SERVICES

CI

- ❖ Architectural Consultancy and Project Management
- ❖ Interior & Exterior Architectural Design
- ❖ Design toward LEED certification upon demand
- ❖ Architectural Corporate Interior Design
- ❖ MEP Engineering Services
- ❖ Façade design & Signboards for Corporate
- ❖ Offices — Theaters — Hotels — Banks — Restaurants Furniture Supply
- ❖ Architectural Fit-Out Contracting along with Offices, Restaurants, Hotels, Smart Banks and Banks, Cinemas and Theaters Fit-Out
- ❖ Landscapes & LED screens 3D immersive effects for façades including indoors

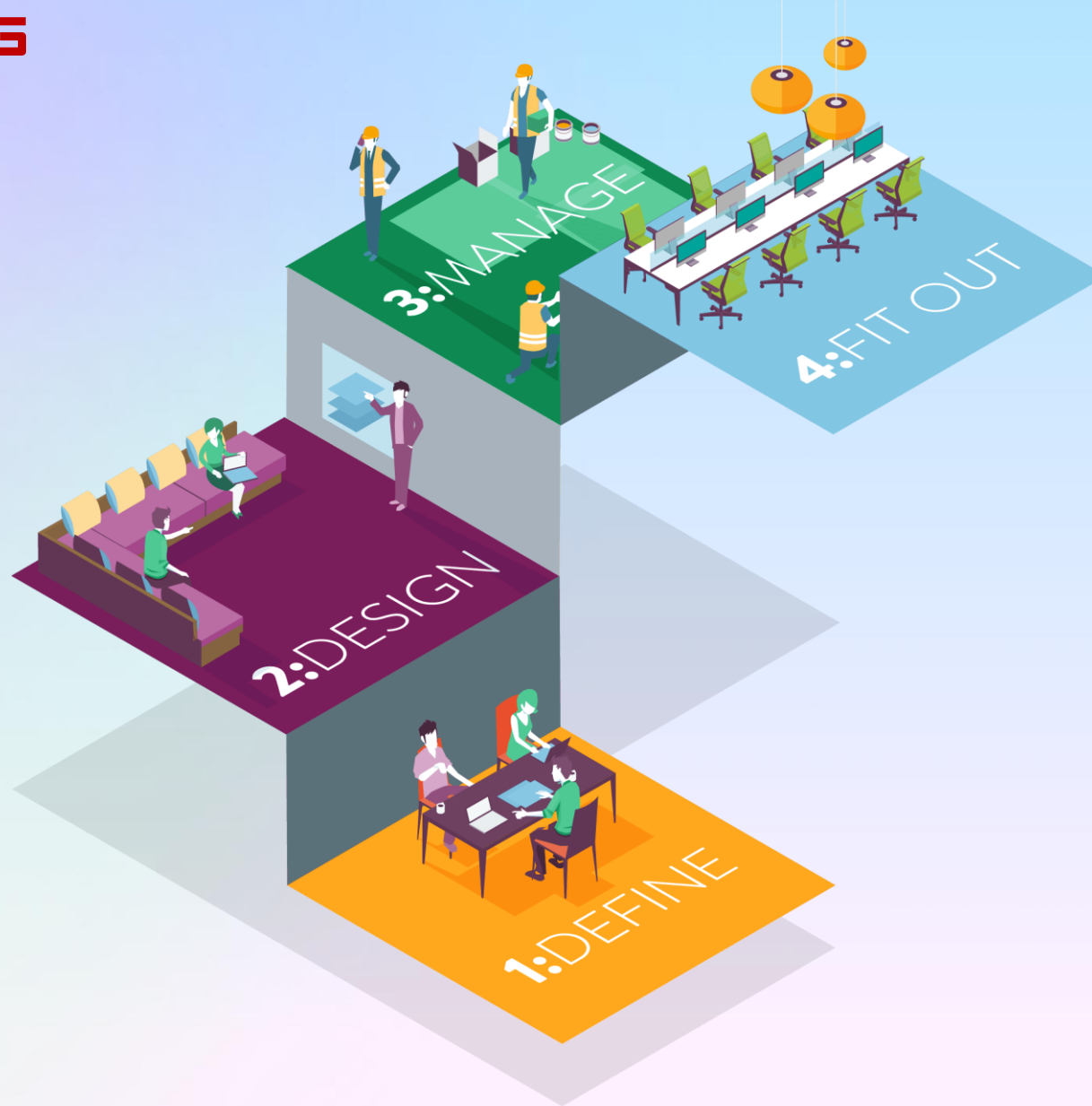


Architecture is basically the design of interiors, the art of organizing interior space.



CORPORATE CONSULTANCY & PM - FIT OUT CONTRACTING

CI



CI OFFICES - BANKS - HOTELS - CINEMAS RETAILS FIT-OUT

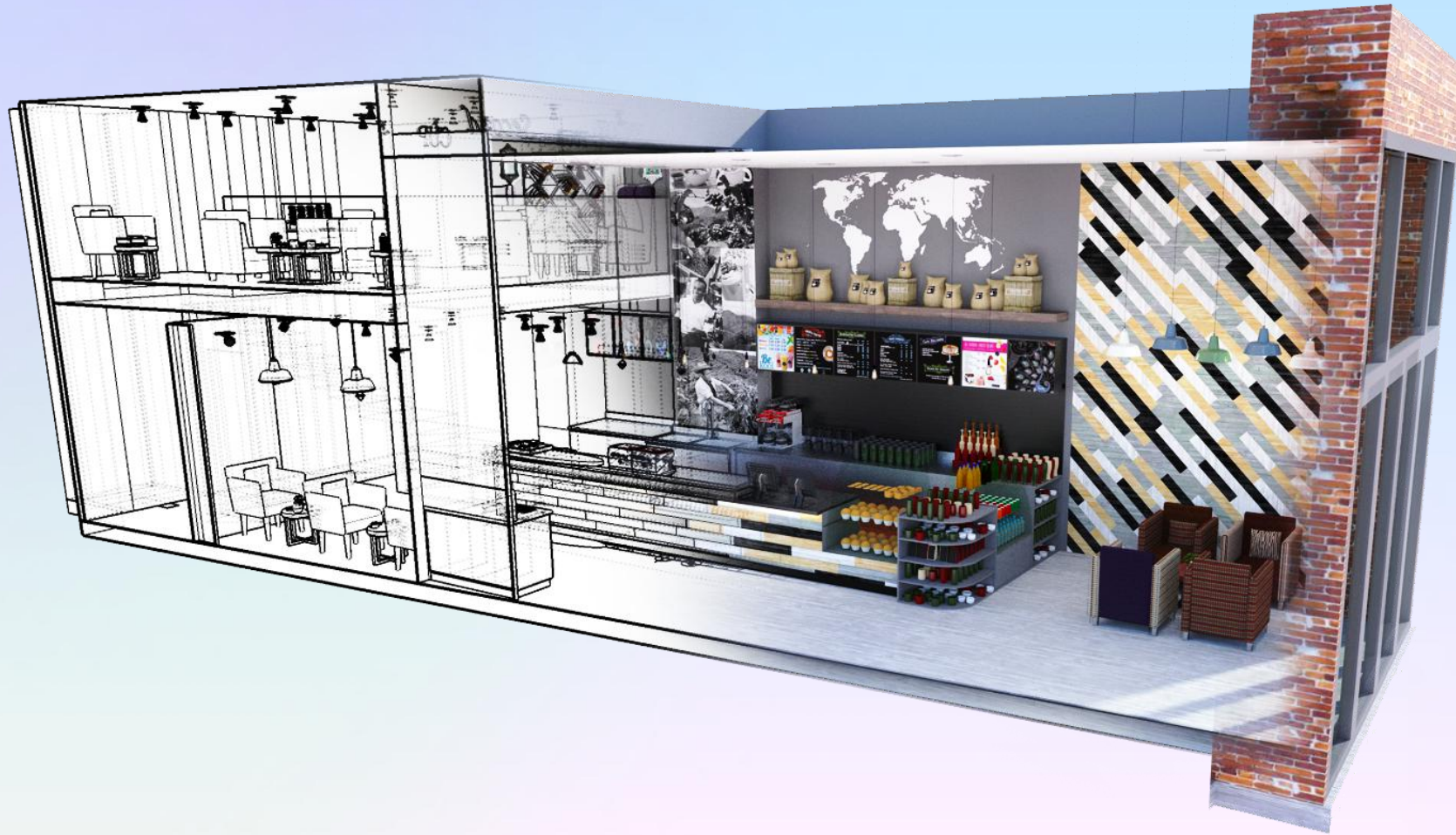
CI

At CI, when it comes to professional and high-quality office fit-out and shop fit-out services, we are unparalleled. We make sure to apply the best methods in a fit-out contracting process. Our track record reveals broader experience across a wider range of sectors, geographies, and projects than any other contractor in the market. From major office fit-outs to large-scale global retail roll-out programs, from 'day-two' works to ATM installations, for decades we have delivered environments vital to our clients' business operations and highly responsive to their evolving industries



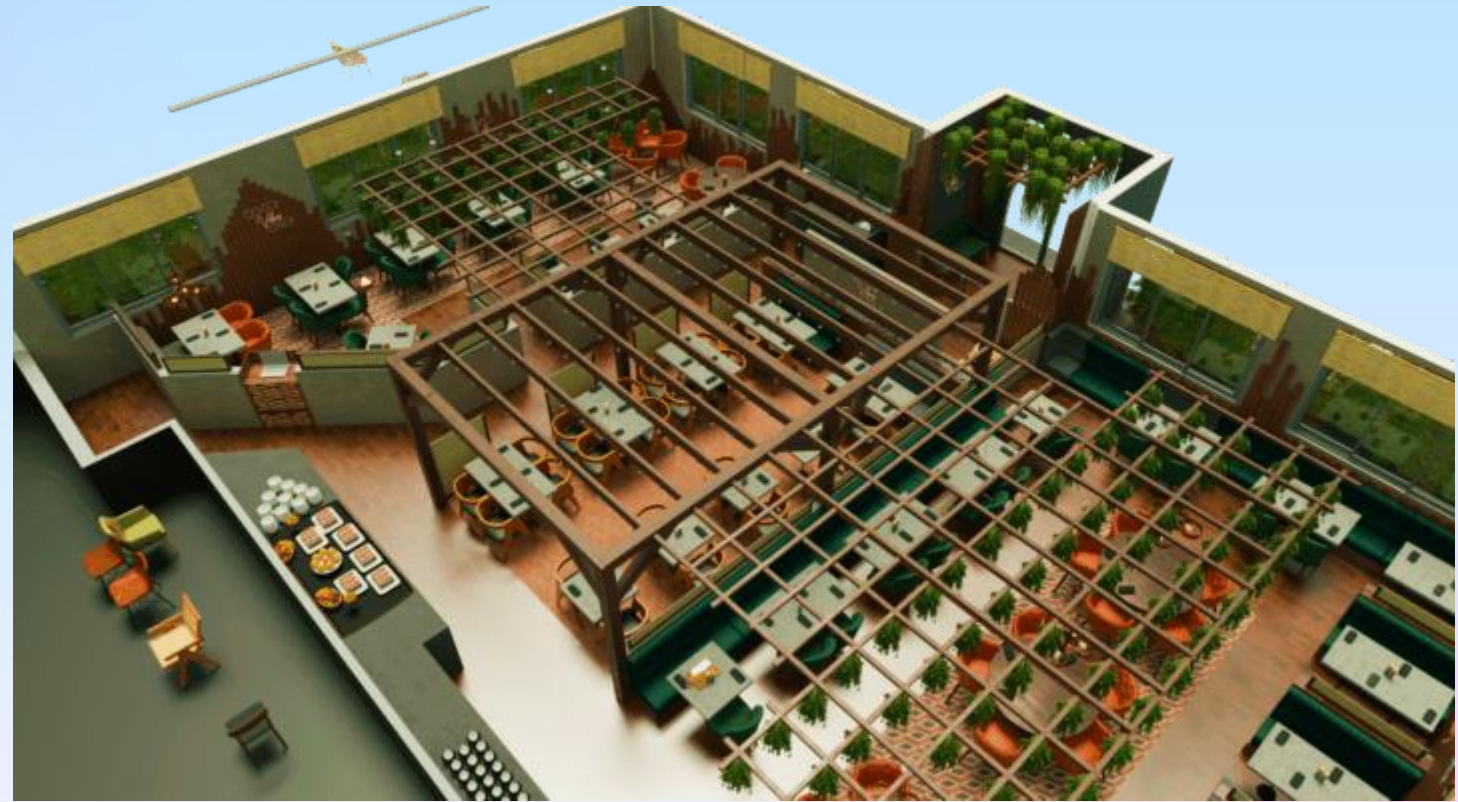
F&B CONSULTANCY & PM - FIT OUT CONTRACTING

CI



CI RESTAURANTS FIT OUT CONTRACTING

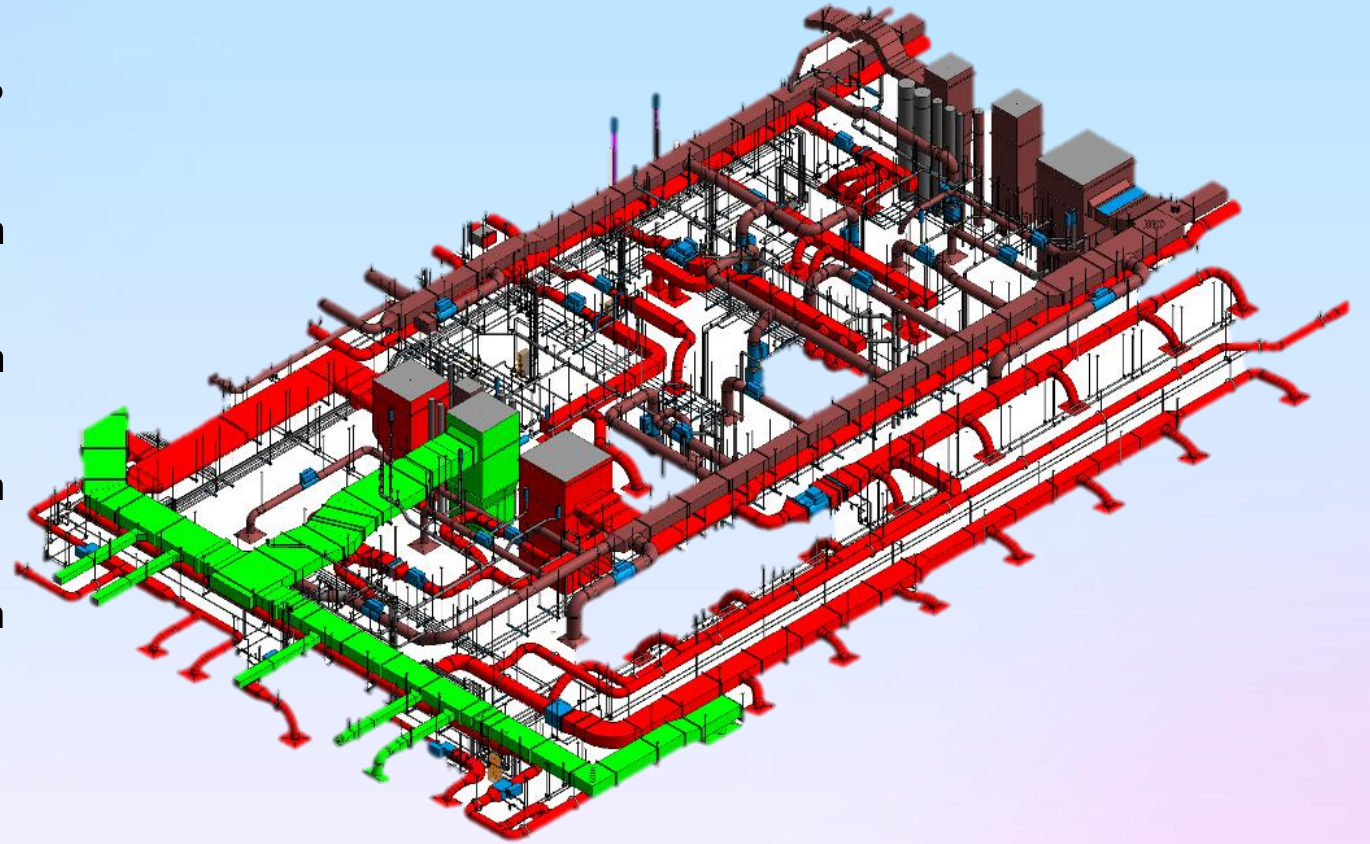
❖ CI makes sure about the creation of inspired, brand-strengthening design experiences that evoke a distinct sense of place, while delighting the world's most discriminating travelers. In every project, CI consistently sets new standards for luxury, comfort and innovation in hospitality restaurants interior design & fit-out decoration contracting



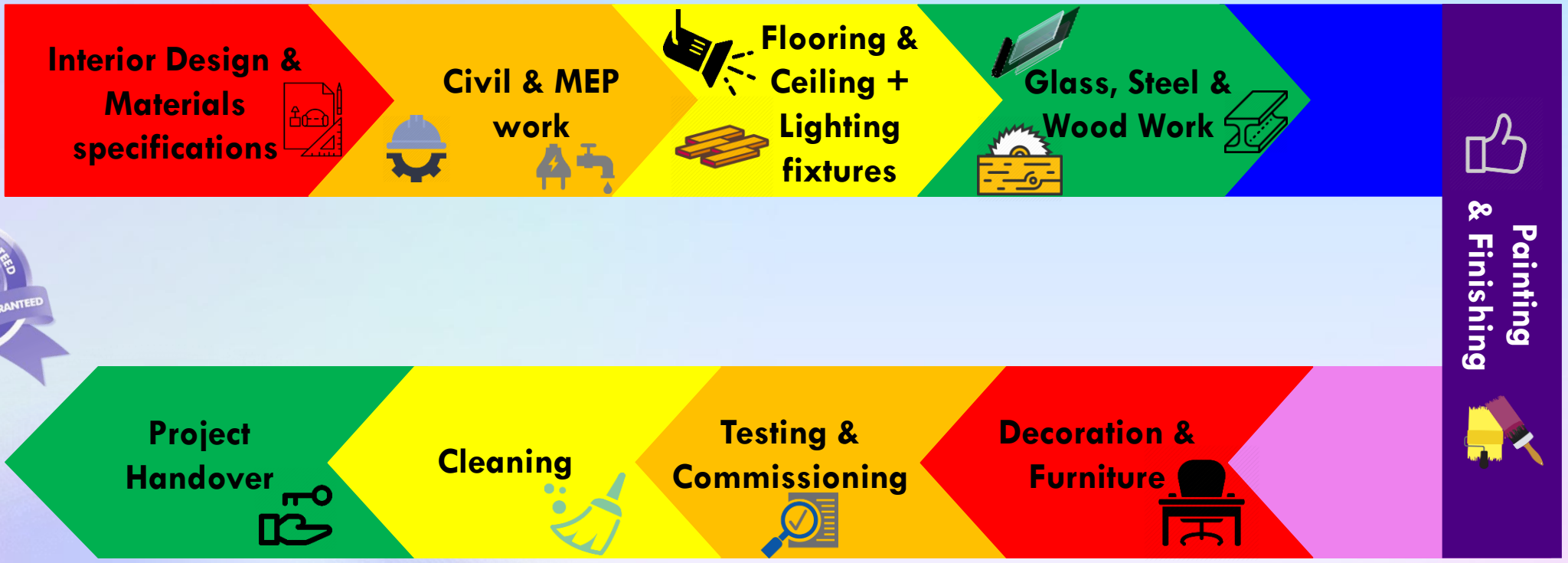
OUTSTANDING MEP KNOWLEDGE

CI

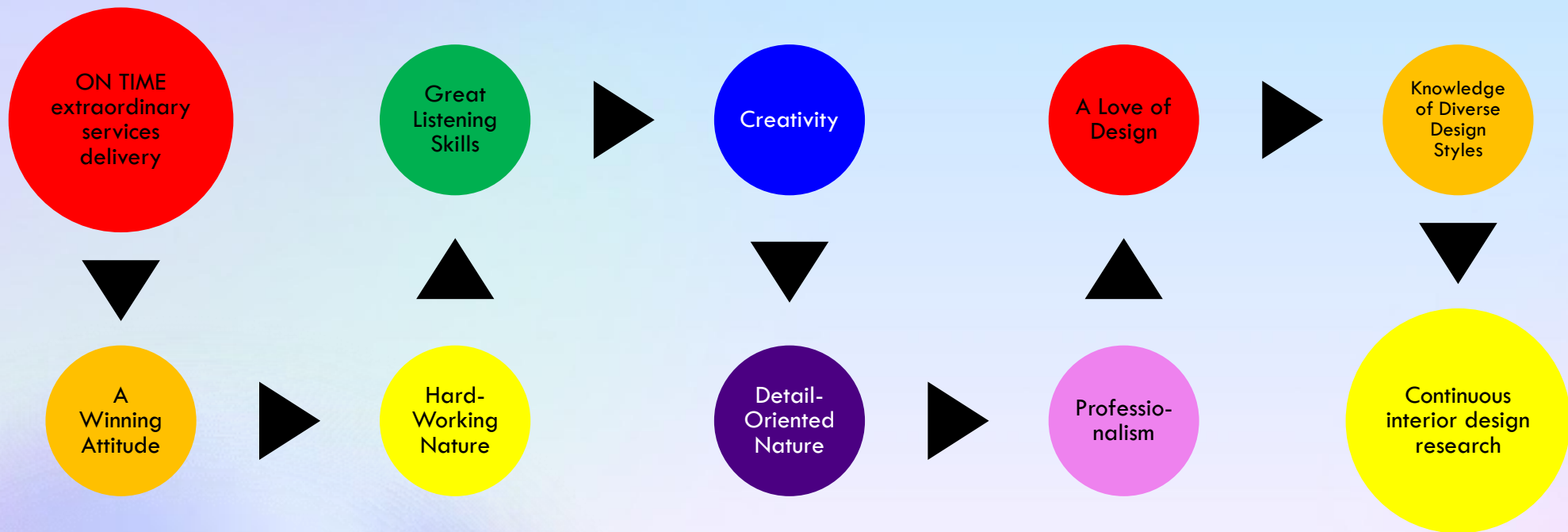
- ❖ CI takes exceptional care with experts in MEP design & execution which are very essential in any project's management. We insist on providing plans, accurate documentation in order to achieve the resulting facilities with excellent technical performance



CI ASSURANCE OF DELIVERABLES BY MONITORING AN EXCELLENT WORK METHODOLOGY



WHAT MAKES CI FEATURED IN INTERIOR ARCHITECTURE & FIT-OUT



CI

AFTER-SALES



WE STAY CONNECTED WITH CLIENTS



Project

CI earns client's trust
CI fulfils the agreed upon
Following up with the delivery team to ensure timely delivery

Commissioning

User training if needed
Extended Warranty services with complete documentations
Seeking feedback

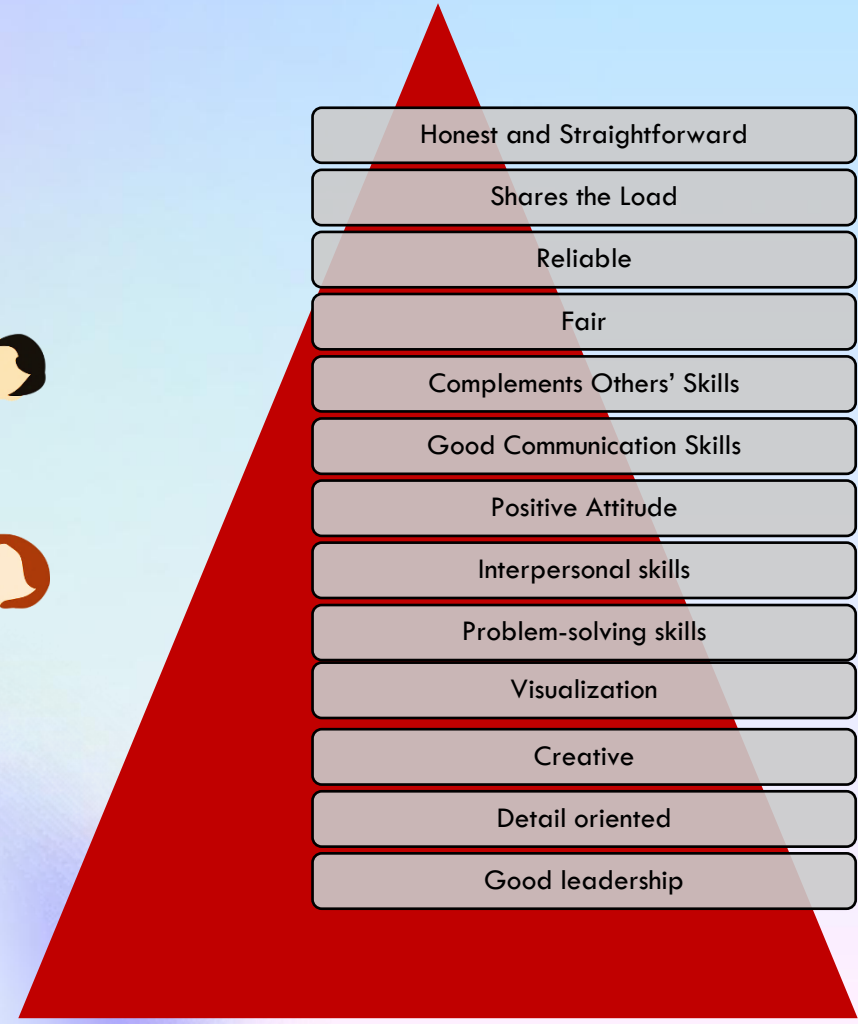
After-sales

Updating the customers about the nature of after sales-services
Fast after-sales services post complaint

AFTERSALES



CI'S TEAM MEMBERS



INTERIOR
DESIGN
ADDICT



CI

CI PRECIOUS CLIENTS IN SAUDI ARABIA

**WE SEE OUR SUCCESS
IN OUR CLIENT'S
SATISFACTION**



SOME OF CI PRECIOUS CLIENTS

CI



مدينة الملك عبدالعزيز
للعلم والتكنولوجيا KACST

spark

مدينة الملك سلمان للطاقة
King Salman Energy Park



أرامكو السعودية
Saudi Aramco

Deloitte.

الشركة الوطنية للخدمات الزراعية

AgriServ



AIRBUS



وزارة الطاقة

MINISTRY OF ENERGY

الهيئة العامة للترفيه
General Entertainment Authority



وزارة الصحة
Ministry of Health

مطارات الرياض
riyadh airports



GACA®

الهيئة العامة للطيران المدني
General Authority of Civil Aviation

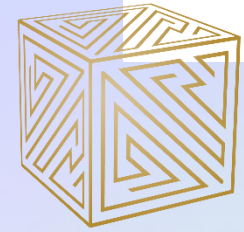
SBA

الهيئة العامة للإذاعة والتلفزيون
SAUDI BROADCASTING AUTHORITY



SOME OF CI PRECIOUS CLIENTS

CI



effect doctors

إسناد
ESNAD
الشركة السعودية لخدمات التعدين
SAUDI MINING SERVICES CO.



SCAI

الشركة السعودية
للذكاء الاصطناعي

NEW MURABBA

LOUNGE
Restaurant & Cafe

Nesma
& Partners
نيسما
وشركاهم

HONOR



نيوم NEOM

نيسما
للصناعات المتحدة
NESMA
UNITED INDUSTRIES

مركز الملك عبد الله المالي
KAFD

البنك العربي الوطني
arab national bank

PENCIL™

بنك الرياض
Riyad Bank



SOME OF CI PRECIOUS CLIENTS

CI



مجمع الملك سلمان
العالمي للغة العربية

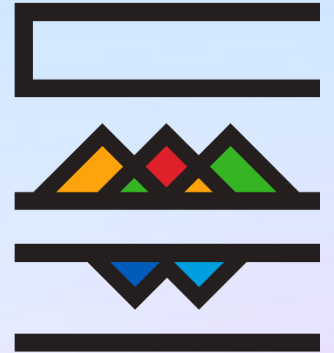
King Salman Global Academy for Arabic Language

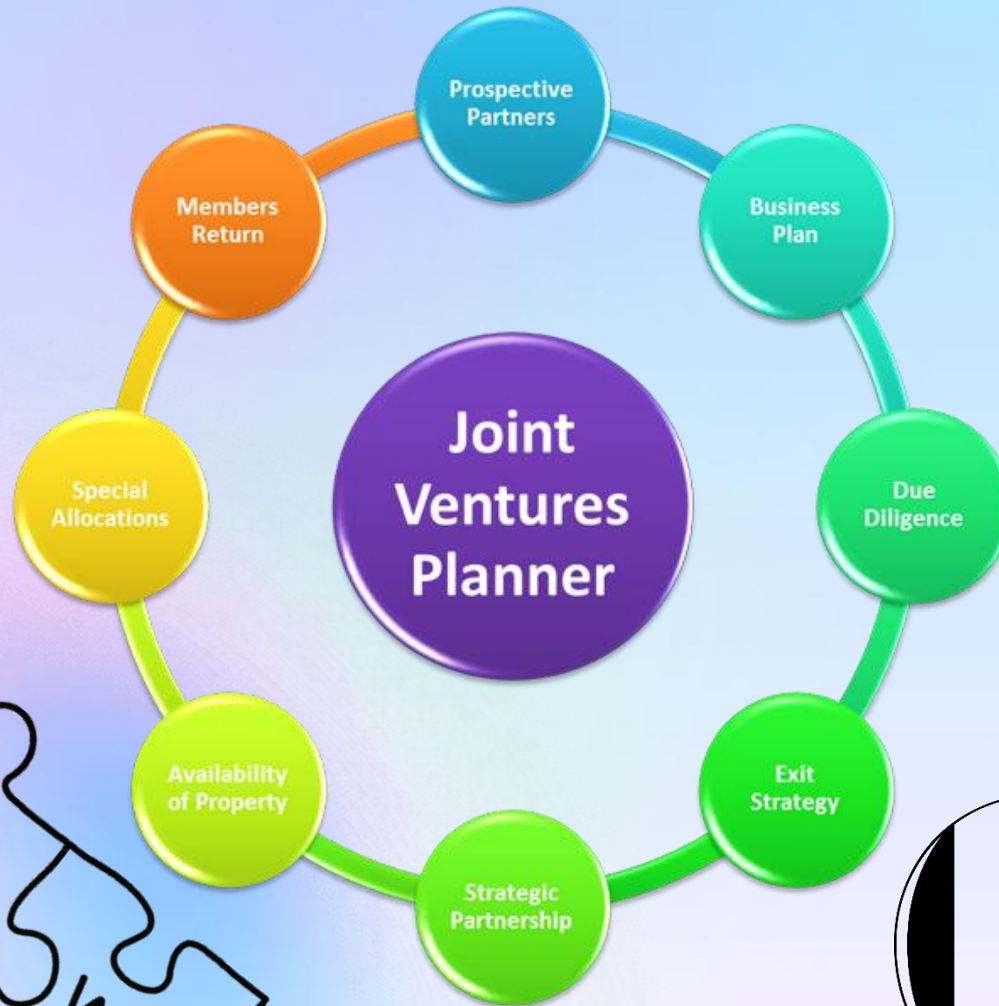


وزارة الاستثمار
Ministry of Investment

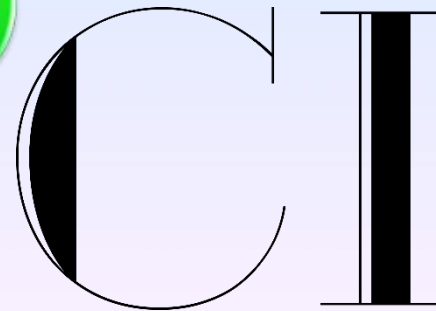


MARRIOTT





Alliances can provide access



JOINT VENTURES

CI

- ❖ CI makes sure to partnership through joint ventures for combining resources and expertise in order to deliver the interior design along with best Fit-Out consultations and contracting services. These partnerships offer great advantages such:
 - ✓ Access to new markets and distribution networks
 - ✓ Increased capacity
 - ✓ Access to greater resources, including specialized staff and technology
 - ✓ New insights and expertise
 - ✓ With JVS, our potential is virtually limitless
 - ✓ Better resources



SOME OF CI JOINT VENTURES

CI



SOME OF CI JOINT VENTURES

CI



OFFICES FIT OUT 2025 TRENDS OFFERED BY CI

CI



OFFICES FIT OUT 2025 TRENDS OFFERED BY CI

CI



OFFICES FIT OUT 2025 TRENDS OFFERED BY CI

CI



OFFICES FIT OUT 2025 TRENDS OFFERED BY CI

CI



It comes with full furniture collections along with meeting room, offices and workspaces



OFFICES FIT OUT 2025 TRENDS OFFERED BY CI

CI



It comes with full furniture
collections along with
meeting room, offices and
workspaces



OFFICES FIT OUT 2025 TRENDS OFFERED BY CI

CI



It comes with full furniture collections along with meeting room, offices and workspaces



OFFICES FIT OUT 2025 TRENDS OFFERED BY CI

CI



It comes with full
furniture collections
along with meeting
room, offices and
workspaces



OFFICES FIT OUT 2025 TRENDS OFFERED BY CI

CI



It comes with full furniture collections along with meeting room, GM office and workspaces



OFFICES FIT OUT 2025 TRENDS OFFERED BY CI

CI



OFFICES FIT OUT 2025 TRENDS OFFERED BY CI

CI



OFFICES FIT OUT 2025 TRENDS OFFERED BY CI

CI



OFFICES FIT OUT 2025 TRENDS OFFERED BY CI

CI



OFFICES FIT OUT 2025 TRENDS OFFERED BY CI

CI



OFFICES FIT OUT 2025 TRENDS OFFERED BY CI

CI



OFFICES FIT OUT 2025 TRENDS OFFERED BY CI

CI



OFFICES FIT OUT 2025 TRENDS OFFERED BY CI

CI



OFFICES FIT OUT 2025 TRENDS OFFERED BY CI

CI



OFFICES FIT OUT 2025 TRENDS OFFERED BY CI

CI



OFFICES FIT OUT 2025 TRENDS OFFERED BY CI

CI



OFFICES FIT OUT 2025 TRENDS OFFERED BY CI

CI



Titanium



OFFICES FIT OUT 2025 TRENDS OFFERED BY CI

CI



OFFICES FIT OUT 2025 TRENDS OFFERED BY CI

CI



OFFICES FIT OUT 2025 TRENDS OFFERED BY CI

CI



OFFICES FIT OUT 2025 TRENDS OFFERED BY CI

CI



OFFICES FIT OUT 2025 TRENDS OFFERED BY CI

CI



OFFICES FIT OUT 2025 TRENDS OFFERED BY CI

CI



OFFICES FIT OUT 2025 TRENDS OFFERED BY CI

CI



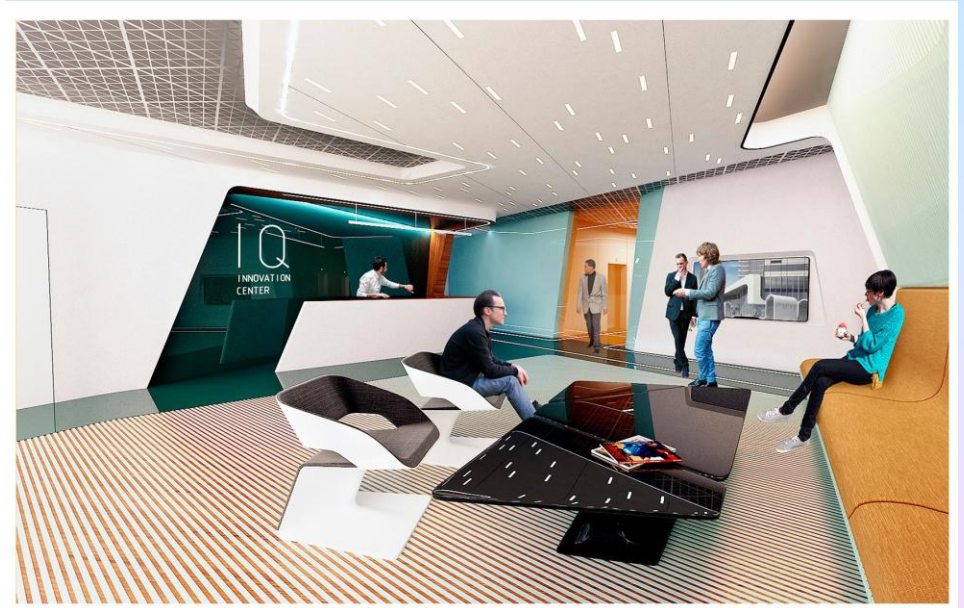
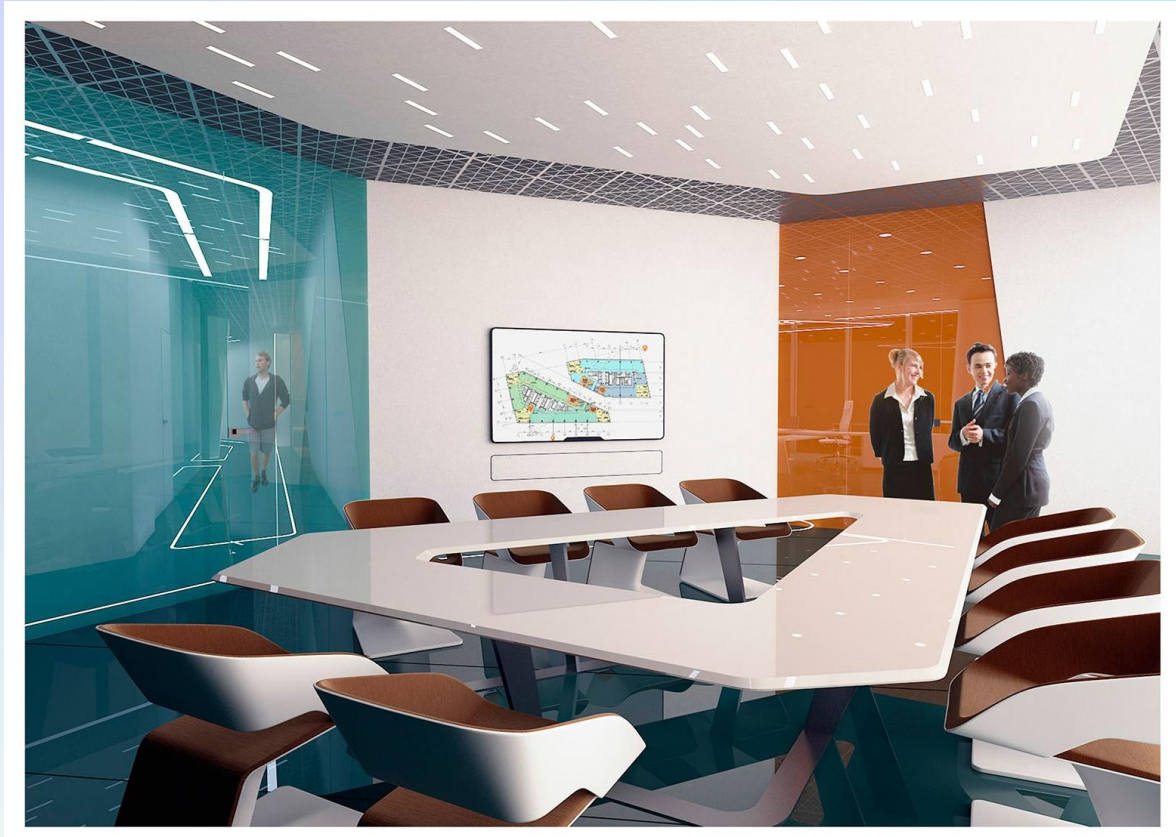
OFFICES FIT OUT 2025 TRENDS OFFERED BY CI

CI



OFFICES FIT OUT 2025 TRENDS OFFERED BY CI

CI



OFFICES FIT OUT 2025 TRENDS OFFERED BY CI

CI



OFFICES FIT OUT 2025 TRENDS OFFERED BY CI

CI



OFFICES FIT OUT 2025 TRENDS OFFERED BY CI

CI



OFFICES FIT OUT 2025 TRENDS OFFERED BY CI

CI



OFFICES FIT OUT 2025 TRENDS OFFERED BY CI

CI



OFFICES FIT OUT 2025 TRENDS OFFERED BY CI

CI



OFFICES FIT OUT 2025 TRENDS OFFERED BY CI

CI



OFFICES FIT OUT 2025 TRENDS OFFERED BY CI

CI



OFFICES FIT OUT 2025 TRENDS OFFERED BY CI

CI



OFFICES FIT OUT 2025 TRENDS OFFERED BY CI

CI



OFFICES FIT OUT 2025 TRENDS OFFERED BY CI

CI



OFFICES FIT OUT 2025 TRENDS OFFERED BY CI

CI



OFFICES FIT OUT 2025 TRENDS OFFERED BY CI

CI



OFFICES FIT OUT 2025 TRENDS OFFERED BY CI

CI



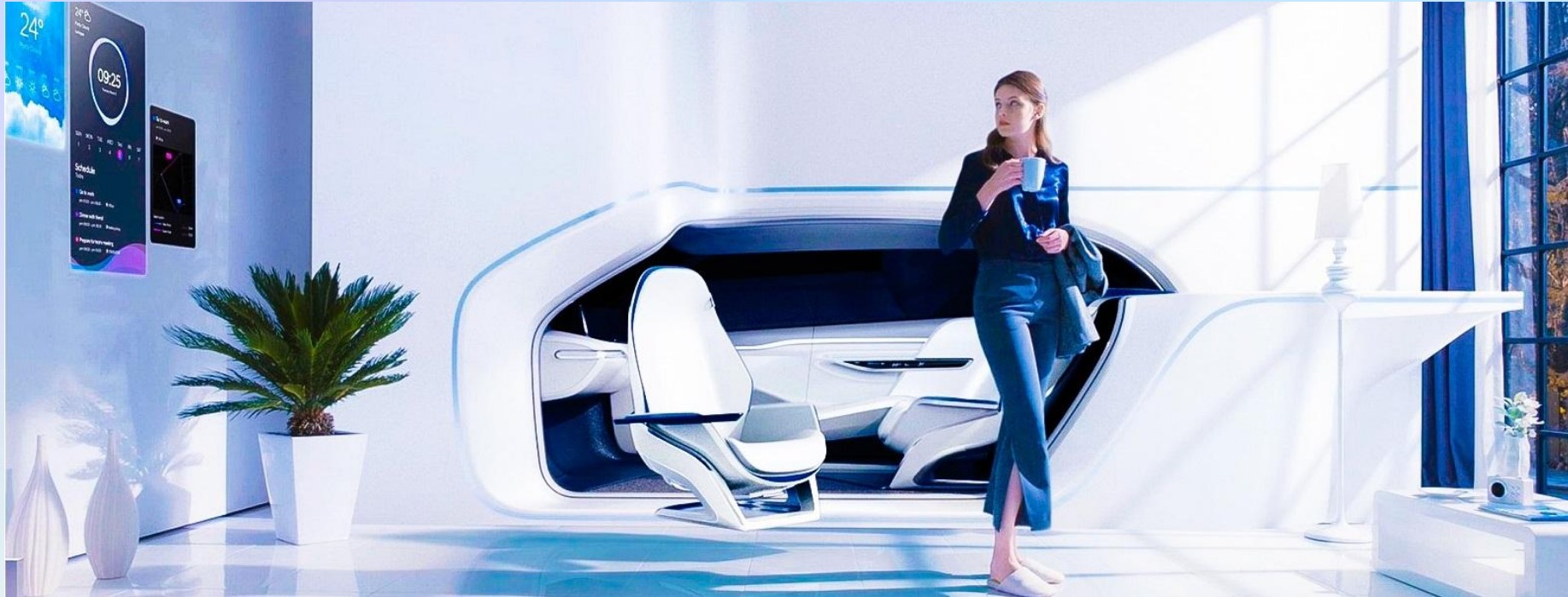
OFFICES FIT OUT 2025 TRENDS OFFERED BY CI

CI



OFFICES FIT OUT 2025 TRENDS OFFERED BY CI

CI



2025 TRENDY OFFICE CHAIRS OFFERED BY CI

CI



2025 TRENDY OFFICE CHAIRS OFFERED BY CI

CI



2025 TRENDY OFFICE CHAIRS OFFERED BY CI

CI



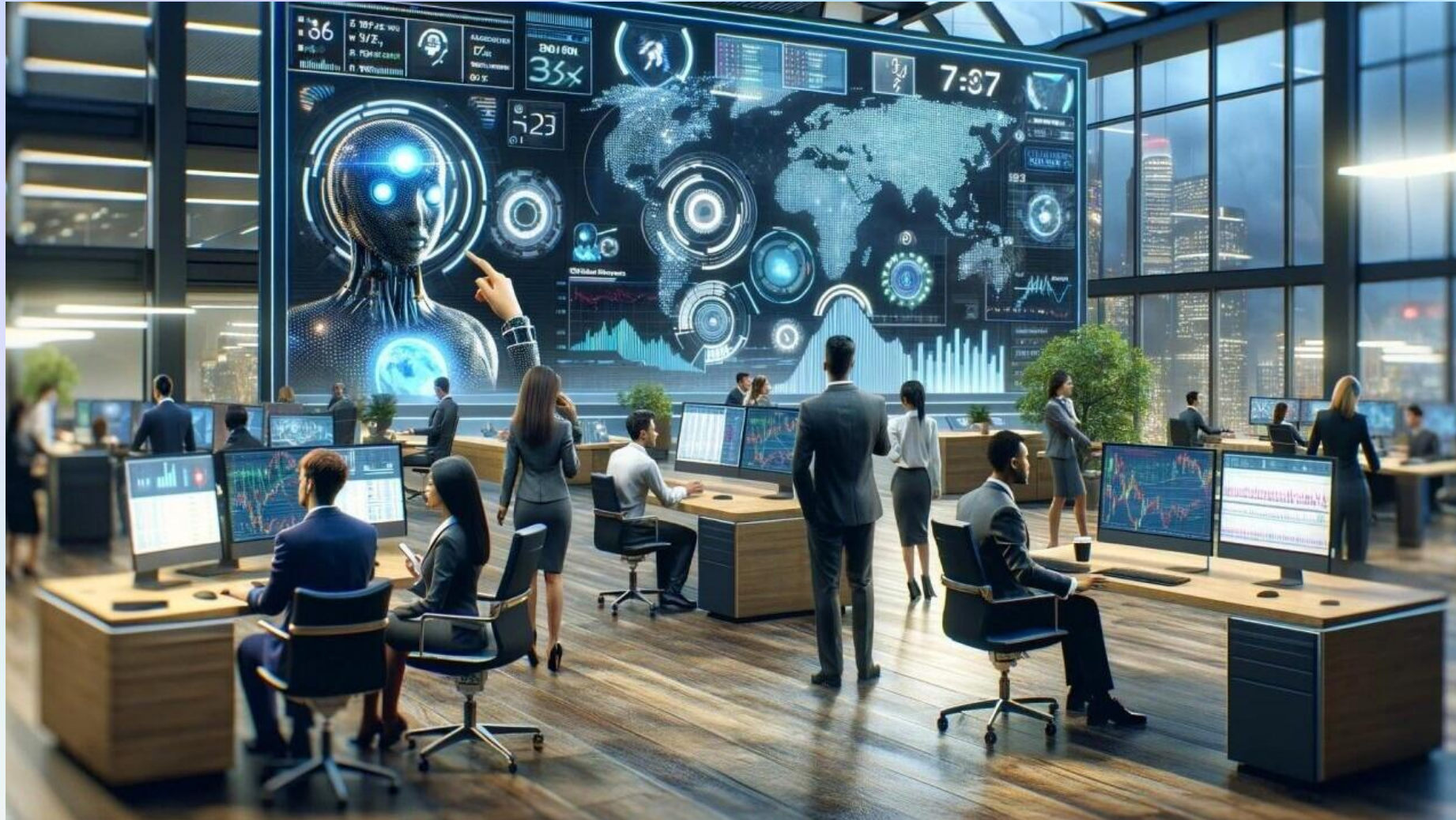
2025 TRENDY OFFICE WORKSTATIONS OFFERED BY CI

CI



2025 TRENDY OFFICE WORKSTATIONS OFFERED BY CI

CI



2025 TRENDY OFFICE WORKSTATIONS OFFERED BY CI

CI



2025 TRENDY OFFICE WORKSTATIONS OFFERED BY CI

CI



2025 TRENDY OFFICE WORKSTATIONS OFFERED BY CI

CI



2025 TRENDY OFFICE WORKSTATIONS OFFERED BY CI

CI



2025 TRENDY OFFICE WORKSTATIONS OFFERED BY CI

CI



2025 TRENDY OFFICE WORKSTATIONS OFFERED BY CI

CI



2025 TRENDY OFFICE WORKSTATIONS OFFERED BY CI

CI



2025 TRENDY OFFICE WORKSTATIONS OFFERED BY CI

CI



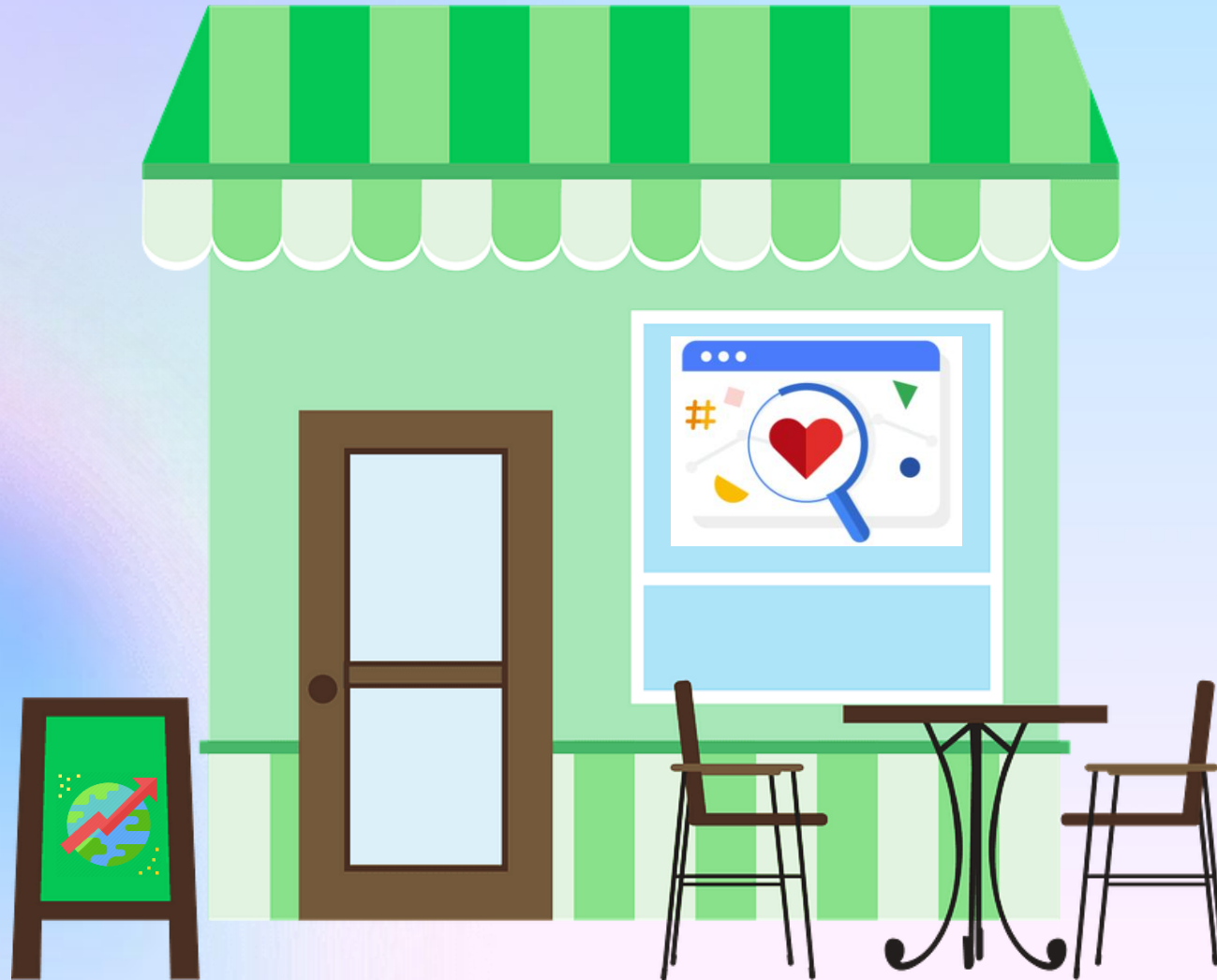
2025 TRENDY OFFICE WORKSTATIONS OFFERED BY CI

CI



RESTAURANTS FIT OUT 2025 TRENDS OFFERED BY CI

CI



RESTAURANTS FIT OUT 2025 TRENDS OFFERED BY CI

CI



RESTAURANTS FIT OUT 2025 TRENDS OFFERED BY CI

CI



RESTAURANTS FIT OUT 2025 TRENDS OFFERED BY CI

CI



RESTAURANTS FIT OUT 2025 TRENDS OFFERED BY CI

CI



RESTAURANTS FIT OUT 2025 TRENDS OFFERED BY CI

CI



RESTAURANTS FIT OUT 2025 TRENDS OFFERED BY CI

CI



RESTAURANTS FIT OUT 2025 TRENDS OFFERED BY CI

CI



RESTAURANTS FIT OUT 2025 TRENDS OFFERED BY CI

CI



RESTAURANTS FIT OUT 2025 TRENDS OFFERED BY CI

CI



RESTAURANTS FIT OUT 2025 TRENDS OFFERED BY CI

CI



RESTAURANTS FIT OUT 2025 TRENDS OFFERED BY CI

CI



RESTAURANTS FIT OUT 2025 TRENDS OFFERED BY CI

CI



Warmer Materials &
Color Palettes



RESTAURANTS FIT OUT 2025 TRENDS OFFERED BY CI

CI



RESTAURANTS FIT OUT 2025 TRENDS OFFERED BY CI

CI



RESTAURANTS FIT OUT 2025 TRENDS OFFERED BY CI

CI



Mixed Seating Options to
Make Spaces More
Flexible/Agile



RESTAURANTS FIT OUT 2025 TRENDS OFFERED BY CI

CI



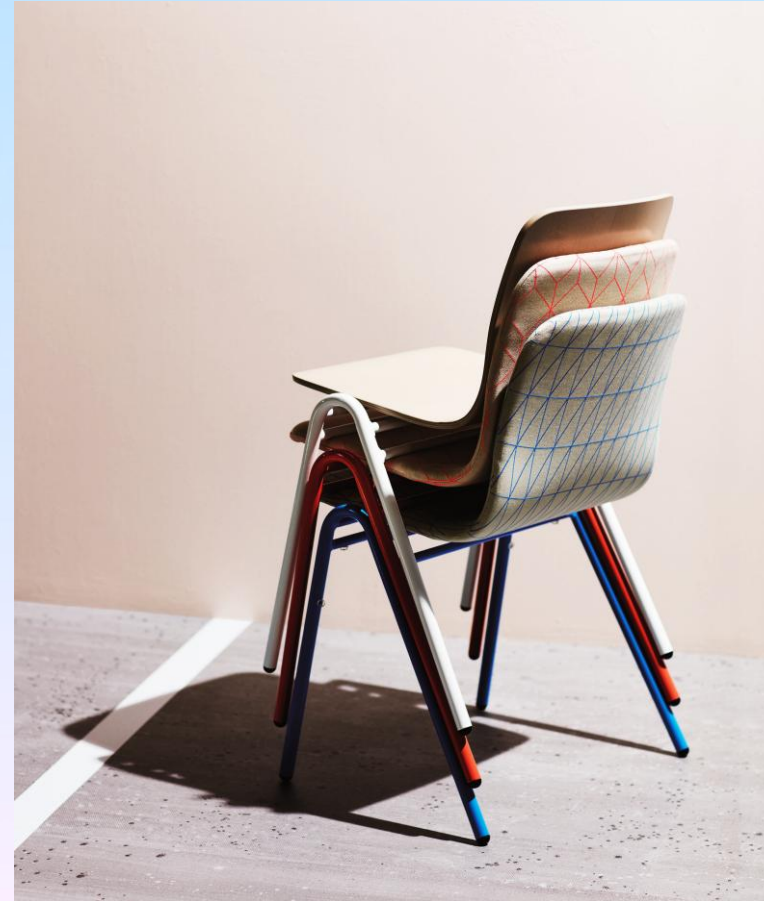
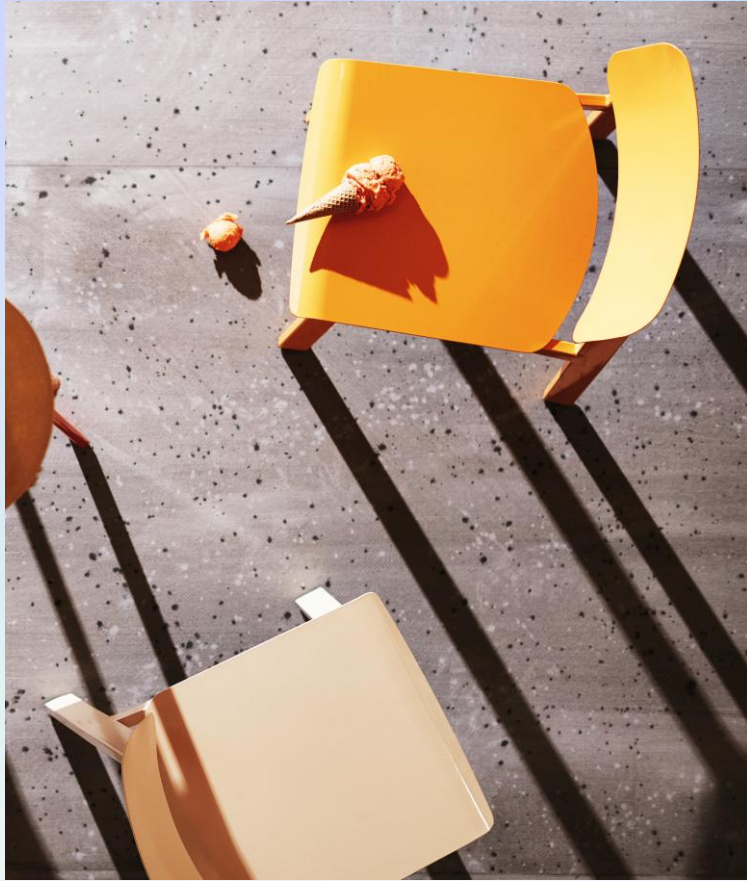
RESTAURANTS FIT OUT 2025 TRENDS OFFERED BY CI

CI



RESTAURANTS FIT OUT 2025 TRENDS OFFERED BY CI

CI



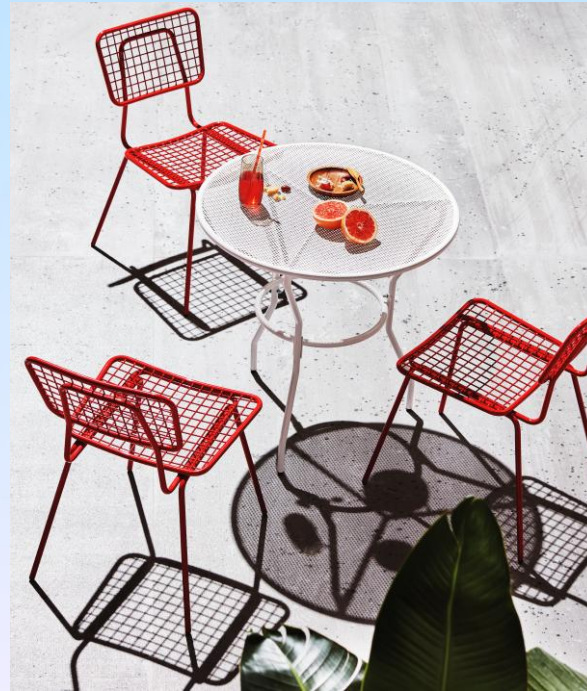
RESTAURANTS FIT OUT 2025 TRENDS OFFERED BY CI

CI



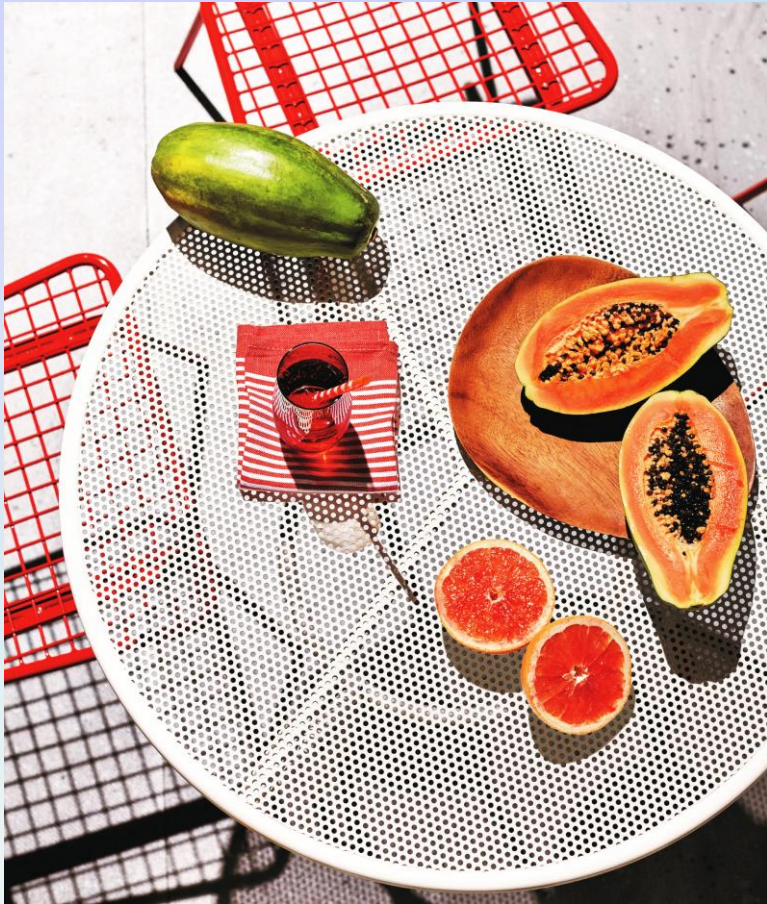
RESTAURANTS FIT OUT 2025 TRENDS OFFERED BY CI

CI



RESTAURANTS FIT OUT 2025 TRENDS OFFERED BY CI

CI



BANKS INTERIOR FIT OUT 2025 TRENDS OFFERED BY CI

CI



BANKS INTERIOR FIT OUT 2025 TRENDS OFFERED BY CI

CI



BANKS INTERIOR FIT OUT 2025 TRENDS OFFERED BY CI

CI



BANKS INTERIOR FIT OUT 2025 TRENDS OFFERED BY CI

CI



BANKS INTERIOR FIT OUT 2025 TRENDS OFFERED BY CI

CI



BANKS INTERIOR FIT OUT 2025 TRENDS OFFERED BY CI

CI



BANKS INTERIOR FIT OUT 2025 TRENDS OFFERED BY CI

CI



Smart Banking

Helping banks transformation, reducing costs and increasing efficiency



BANKS INTERIOR FIT OUT 2025 TRENDS OFFERED BY CI

CI



BANKS INTERIOR FIT OUT 2025 TRENDS OFFERED BY CI

CI



CINEMAS INTERIOR FIT OUT 2025 TRENDS OFFERED BY CI

CI



CINEMAS INTERIOR FIT OUT 2025 TRENDS OFFERED BY CI

CI



CINEMAS INTERIOR FIT OUT 2025 TRENDS OFFERED BY CI

CI



CINEMAS INTERIOR FIT OUT 2025 TRENDS OFFERED BY CI

CI



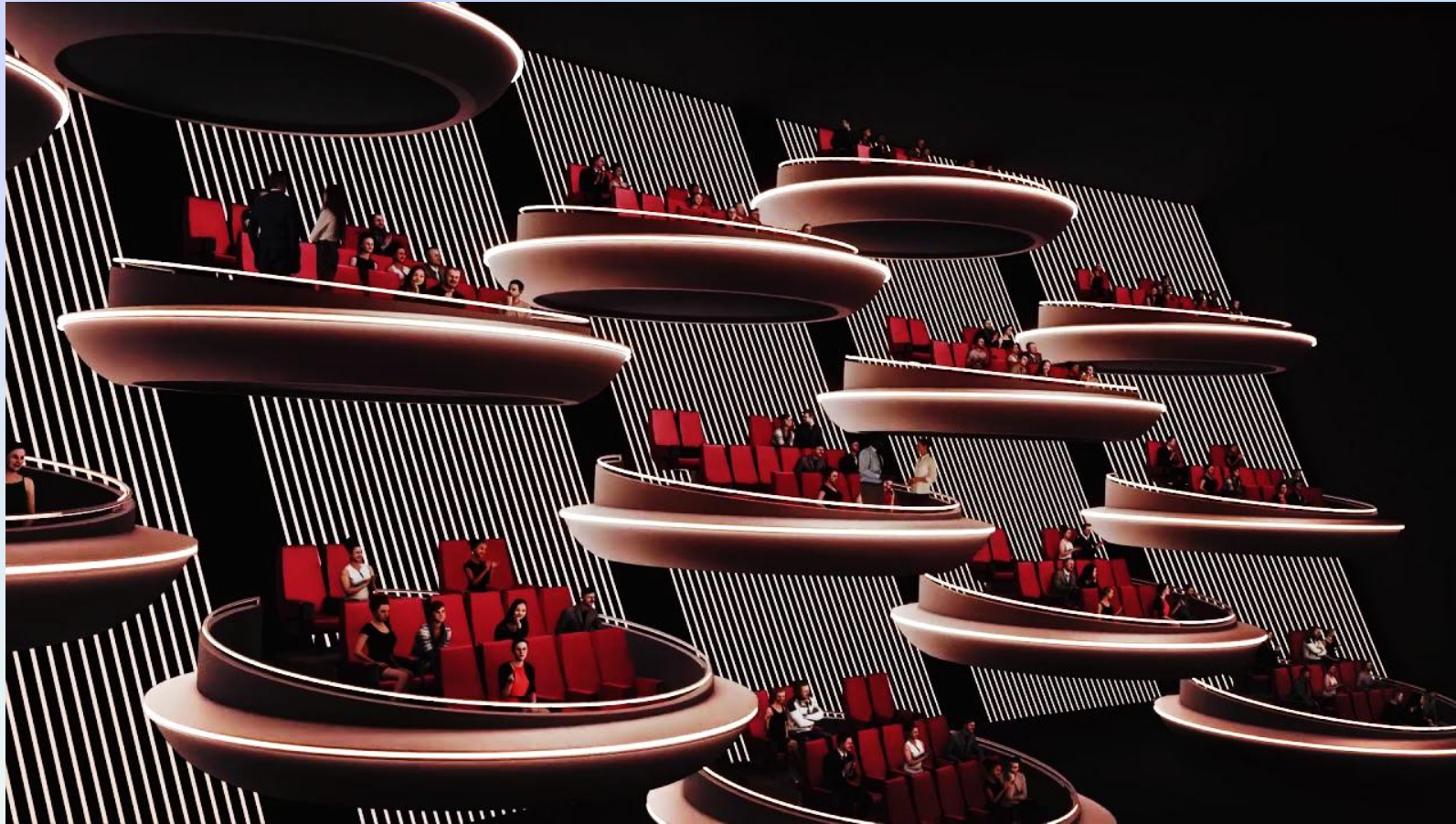
CINEMAS INTERIOR FIT OUT 2025 TRENDS OFFERED BY CI

CI



CINEMAS INTERIOR FIT OUT 2025 TRENDS OFFERED BY CI

CI



CINEMAS INTERIOR FIT OUT 2025 TRENDS OFFERED BY CI

CI



CINEMAS INTERIOR FIT OUT 2025 TRENDS OFFERED BY CI

CI



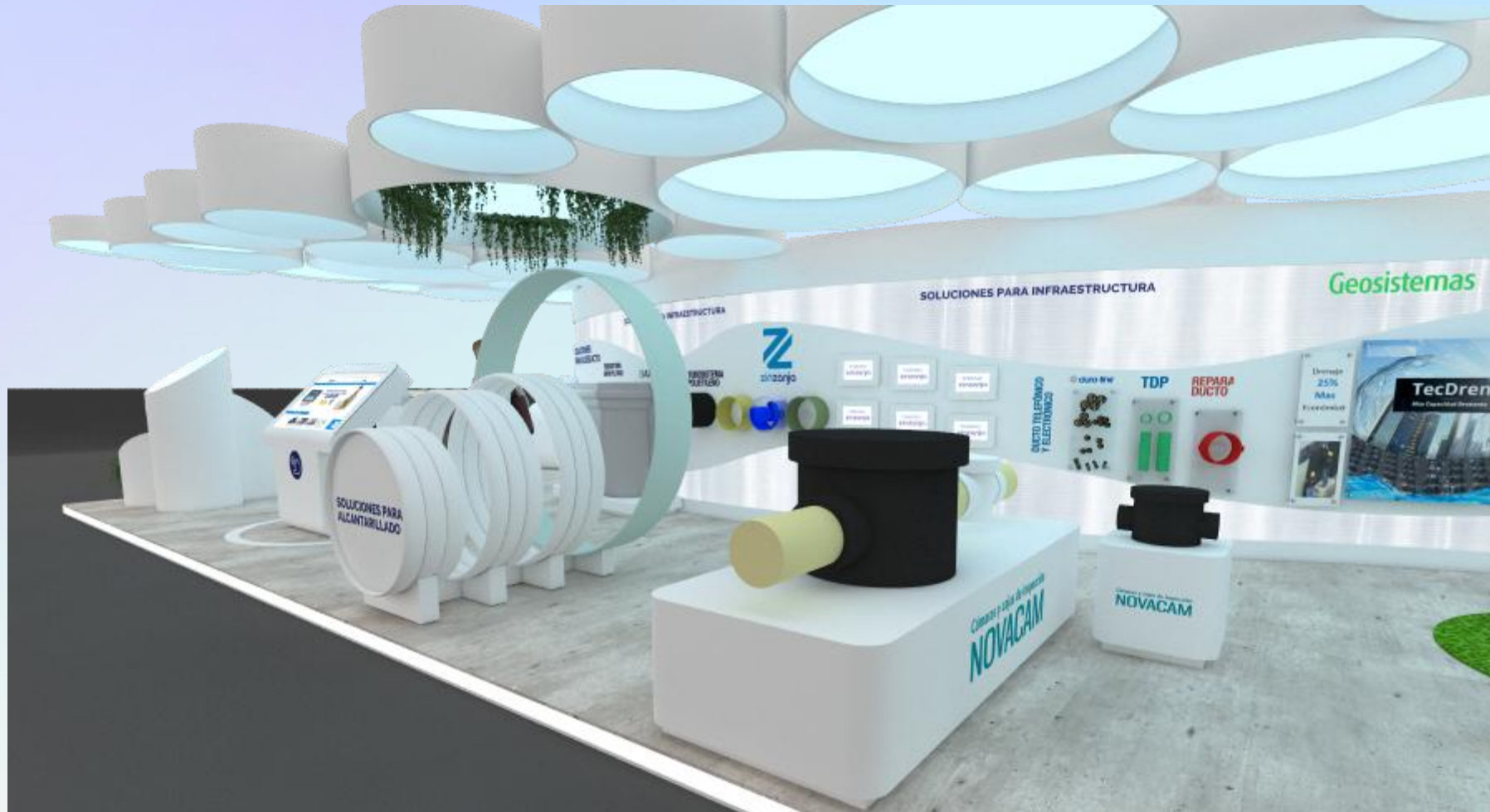
FAIR BOOTHS OUT 2025 TRENDS OFFERED BY CI

CI



FAIR BOOTHS OUT 2025 TRENDS OFFERED BY CI

CI



FAIR BOOTHS OUT 2025 TRENDS OFFERED BY CI

CI



FAIR BOOTHS OUT 2025 TRENDS OFFERED BY CI

CI



FAIR BOOTHS OUT 2025 TRENDS OFFERED BY CI

CI



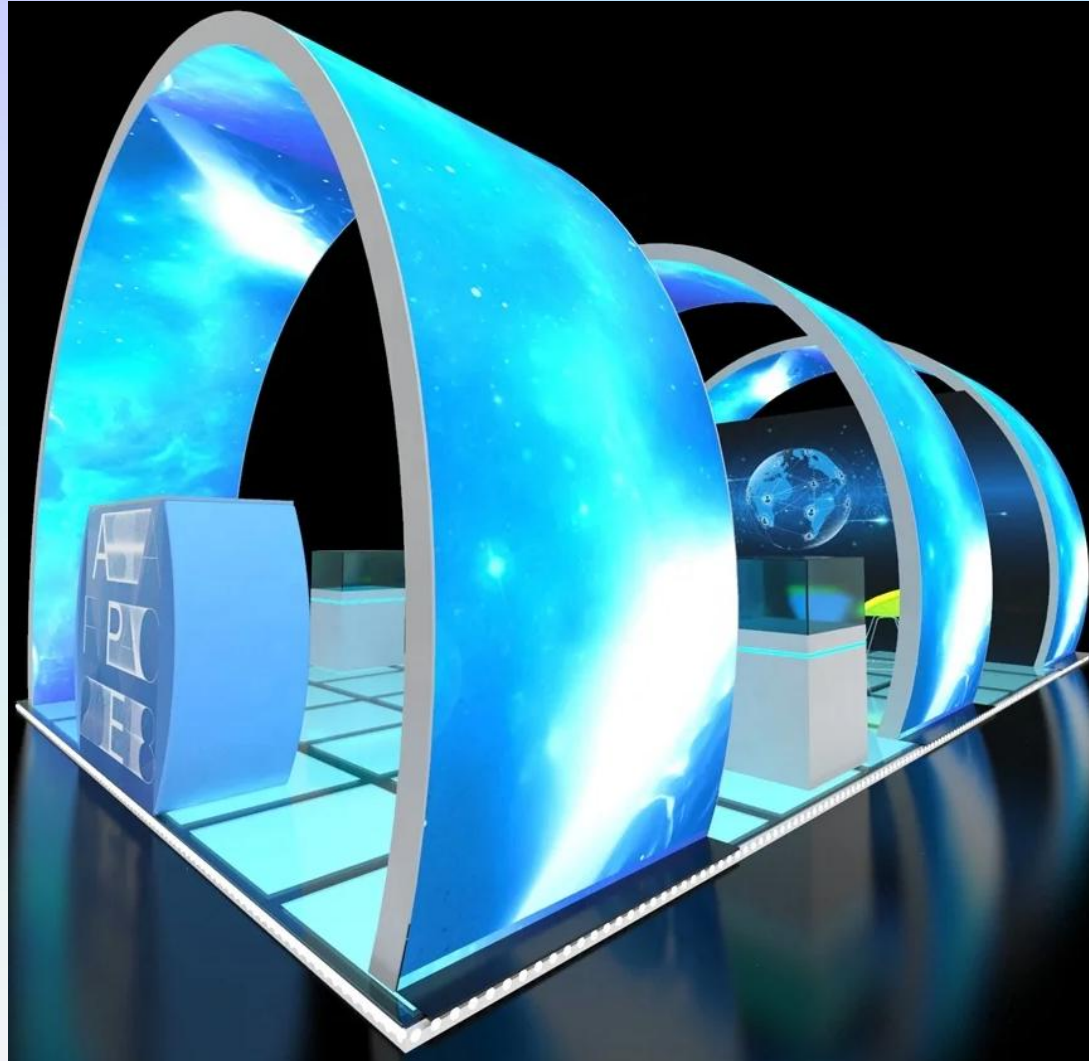
FAIR BOOTHS OUT 2025 TRENDS OFFERED BY CI

CI



FAIR BOOTHS OUT 2025 TRENDS OFFERED BY CI

CI



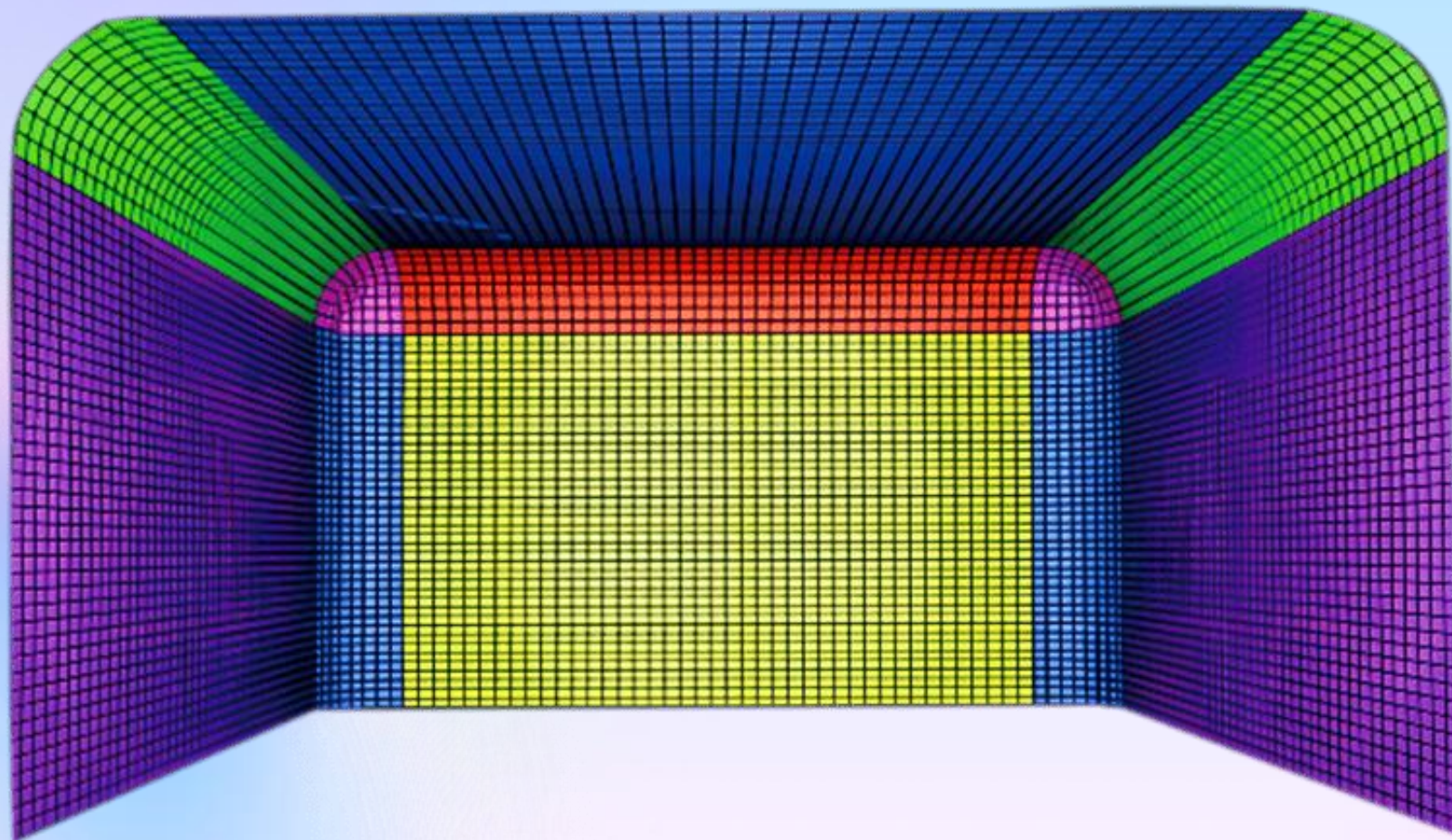
FAIR BOOTHS OUT 2025 TRENDS OFFERED BY CI

CI



3D LED SCREENS FAÇADES & INDOORS BY CI

CI



3D LED SCREENS FAÇADES & INDOORS BY CI

CI



3D LED SCREENS FAÇADES & INDOORS BY CI

CI



3D LED SCREENS FAÇADES & INDOORS BY CI

CI

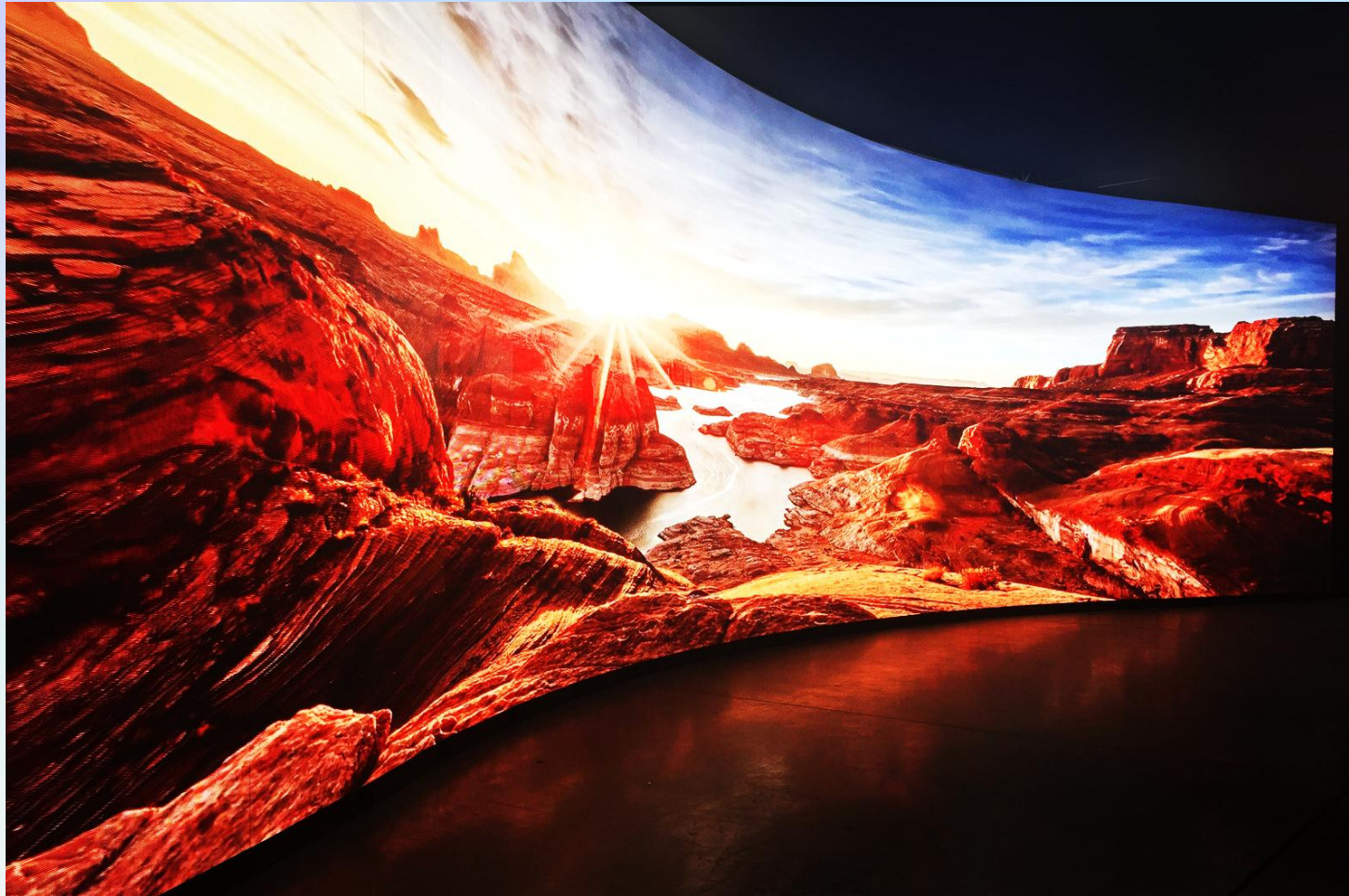


3D LED SCREENS FAÇADES & INDOORS BY CI

CI



3D LED SCREENS FAÇADES & INDOORS BY CI



3D LED SCREENS FAÇADES & INDOORS BY CI

CI



3D LED SCREENS FAÇADES & INDOORS BY CI



OFFICES ACHIEVED* PROJECTS

CI



*In collaboration PCA Saudi Arabia



SOME OF CI ICONIC PROJECTS

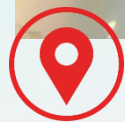


- 1. In Saudi Arabia, CI is in collaboration with a Saudi Arabia Legal Entity which is within the brand authorization given to CI's Subsidiaries in Riyadh*
- 2. Ask for the firm profile of the authorized entity to check more about the offices' achieved projects*
- 3. Due to privacy and confidentiality including NDAs, we can't display most of our projects in this file*
- 4. More about our offices' achieved projects can be revealed upon request and sometimes it can be shown only on live slides at the firm's premises*
- 5. The following is a minimal mention of this section*



SOME OF CI ICONIC PROJECTS

CI

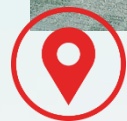


PENCIL → Riyadh - KSA



SOME OF CI ICONIC PROJECTS

CI



PENCIL → Riyadh - KSA



SOME OF CI ICONIC PROJECTS

CI



MOCA → Emirates Towers-UAE

*Furniture by Codutti



SOME OF CI ICONIC PROJECTS

CI



MOCA → Emirates Towers-UAE

*Furniture by Codutti



SOME OF CI ICONIC PROJECTS

CI



AWTAD → Riyadh-KSA



SOME OF CI ICONIC PROJECTS

CI



AWTAD → Riyadh-KSA



SOME OF CI ICONIC PROJECTS

CI



AWTAD → Riyadh-KSA



SOME OF CI ICONIC PROJECTS

CI



AWTAD → Riyadh-KSA



SOME OF CI ICONIC PROJECTS

CI



AWTAD → Riyadh-KSA



SOME OF CI ICONIC PROJECTS

CI



AWTAD → Riyadh-KSA



SOME OF CI ICONIC PROJECTS

CI



AWTAD → Riyadh-KSA

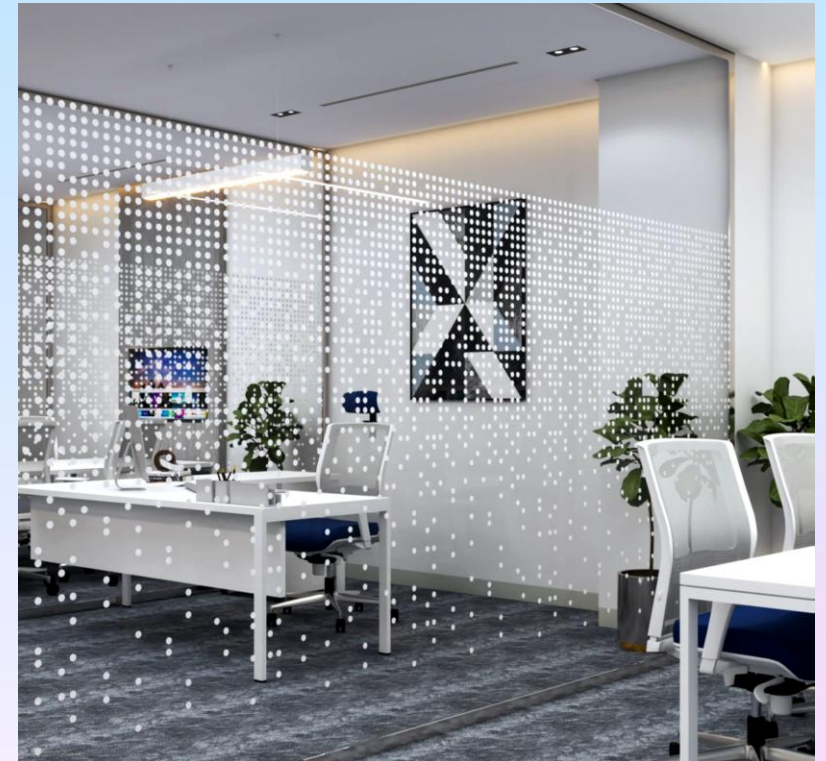


SOME OF CI ICONIC PROJECTS

CI



AWTAD → Riyadh-KSA



SOME OF CI ICONIC PROJECTS

CI



AWTAD → Riyadh-KSA



SOME OF CI ICONIC PROJECTS

CI



AWTAD → Riyadh-KSA



SOME OF CI ICONIC PROJECTS

CI



AWTAD → Riyadh-KSA



SOME OF CI ICONIC PROJECTS

CI



SAJAYA → Riyadh-KSA



SOME OF CI ICONIC PROJECTS

CI



SAJAYA → Riyadh-KSA



SOME OF CI ICONIC PROJECTS

CI



SAJAYA → Riyadh-KSA



SOME OF CI ICONIC PROJECTS

CI



SAJAYA → Riyadh-KSA



SOME OF CI ICONIC PROJECTS

CI



SAJAYA → Riyadh-KSA



SOME OF CI ICONIC PROJECTS

CI



SAJAYA → Riyadh-KSA



SOME OF CI ICONIC PROJECTS

CI



SAJAYA → Riyadh-KSA



RESTAURANTS ACHIEVED* PROJECTS

CI



*In collaboration with PCA Saudi Arabia



SOME OF CI ICONIC PROJECTS

CI

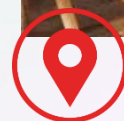


- 1. In Saudi Arabia, CI is in collaboration with a Saudi Arabia Legal Entity which is within the brand authorization given to CI's Subsidiaries in Riyadh*
- 2. Ask for the firm profile of the authorized entity to check more about the restaurants' achieved projects*
- 3. Due to privacy and confidentiality including NDAs, we can't display most of our projects in this file*
- 4. More about our restaurants' achieved projects can be revealed upon request*
- 5. The following is a minimal mention of this section*



SOME OF CI ICONIC PROJECTS

CI

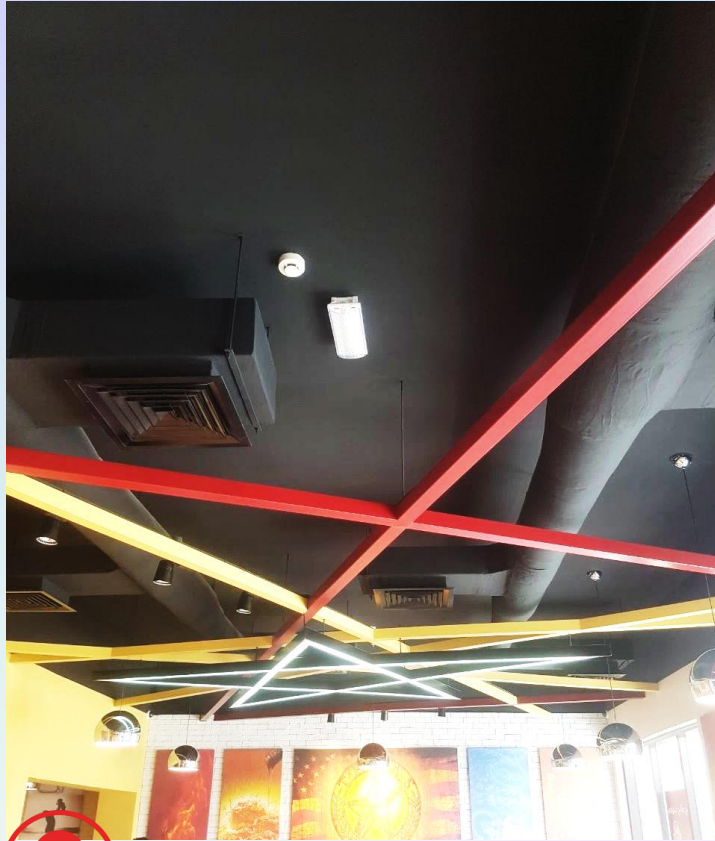


Texas Chicken → Riyadh- KSA



SOME OF CI ICONIC PROJECTS

CI

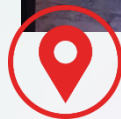


Texas Chicken → Riyadh- KSA

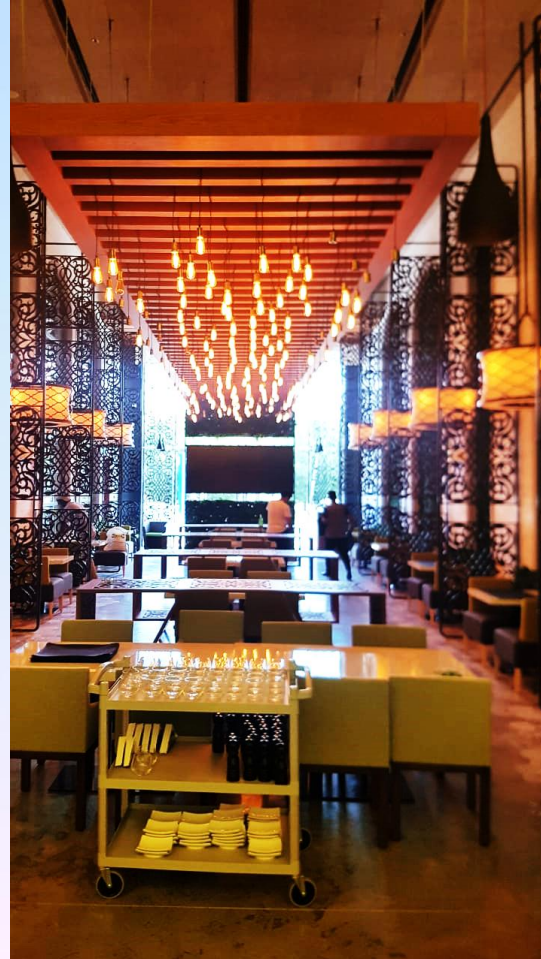


SOME OF CI ICONIC PROJECTS

CI



U Lounge → Riyadh- KSA



CI ONGOING* PROJECTS

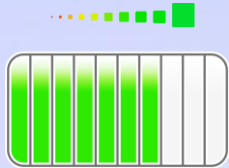
CI



*Exclusively by CI



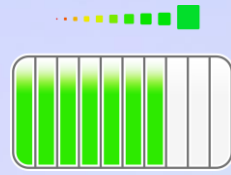
CI Ongoing* Projects



- 1. In Saudi Arabia, CI is in collaboration with a Saudi Arabia Legal Entity which is within the brand authorization given to CI's Subsidiaries in Riyadh*
- 2. Ask for the firm profile of the authorized entity to check more about the ongoing projects*
- 3. Due to privacy and confidentiality including NDAs, we can't display most of our projects in this file*
- 4. More about our ongoing projects can be revealed upon request and sometimes it can be shown only on live slides at the firm's premises*
- 5. The following is a minimal mention of this section*



CI Ongoing* Projects



**CYBER
SECURITY
LAB**

instructors counter with built in monitors

white high gloss decorative element with led light

students units include a stand with two built in monitors

high gloss pvc tiles with led light for ceiling and floor

white high gloss pvc cupboard

white high gloss seat with led light

5%

20%

75%

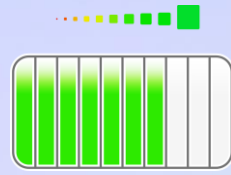
CI



Lab → Dammam - KSA



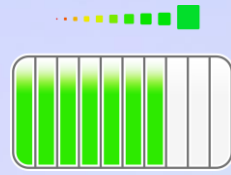
CI Ongoing* Projects



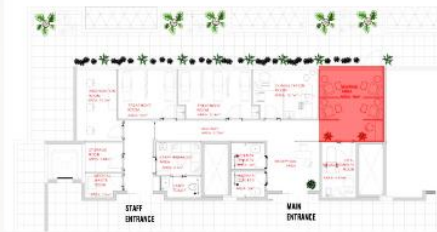

Effect Doctors → Riyadh - KSA



CI Ongoing* Projects



MATERIAL SELECTION




WALLS EMULSION
BEIGE PAINT
TEXTURED FINISH

CEILING EMULSION
WHITE PAINT SMOOTH
FINISH

MATT BLACK
METAL FINISH

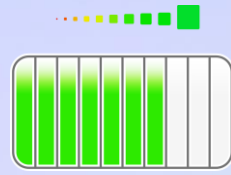
POLISHED
WALLNUT VENEER

BIG SLABS
PORCELAIN
TILING

 Effect Doctors → Riyadh - KSA



CI Ongoing* Projects



MATERIAL SELECTION



WALLS EMULSION
BEIGE PAINT
TEXTURED FINISH



WALLS EMULSION
GREEN PAINT
TEXTURED FINISH



POLISHED
WALNUT VENEER



PORCELAIN
WOODEN EFFECT
FLOORING



CEILING EMULSION
WHITE PAINT SMOOTH
FINISH

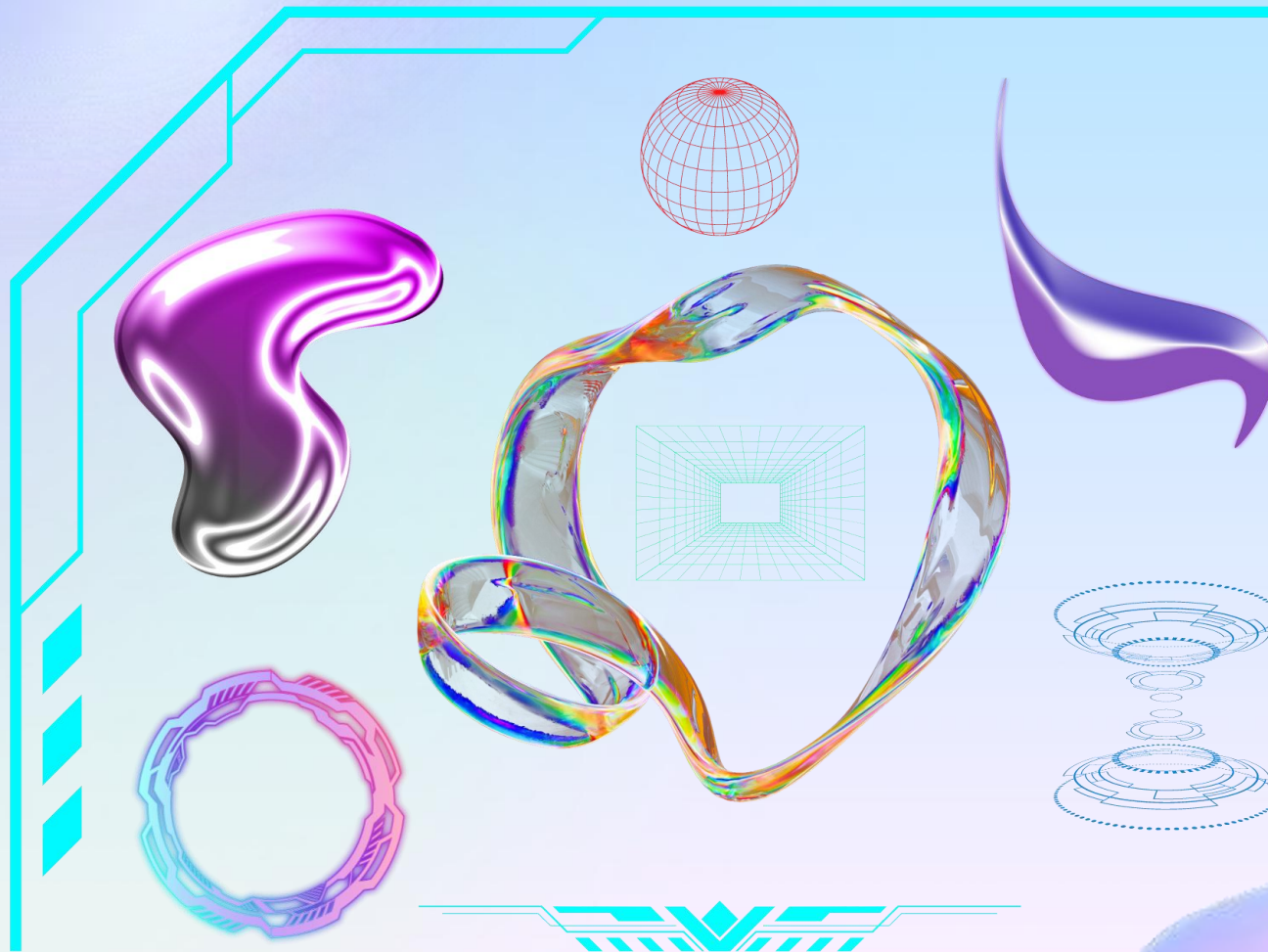


Effect Doctors → Riyadh - KSA



CI FUTURISTIC CONCEPT DESIGNS

CI



CI FUTURISTIC CONCEPT DESIGNS



CI FUTURISTIC CONCEPT DESIGNS



CI FUTURISTIC CONCEPT DESIGNS

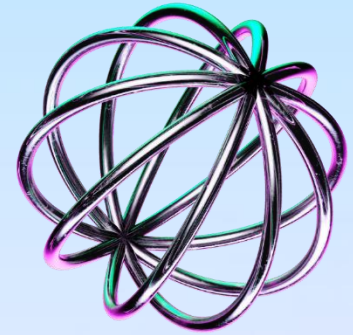


CI FUTURISTIC CONCEPT DESIGNS



CI FUTURISTIC CONCEPT DESIGNS

- ❖ The following are CI's concept designs which have been proposed to ANB bank in Saudi Arabia
- ❖ They have not been selected by the ANB
- ❖ We are presenting them to show the CI's know-how in banks interior design revolution
- ❖ With pride and humility, we are the only ones in the Middle East and the Arabian Gulf who have the ability to implement the following designs. And that is through our partnership with the most important European technology companies that put in our hands the required technical sophisticated tools

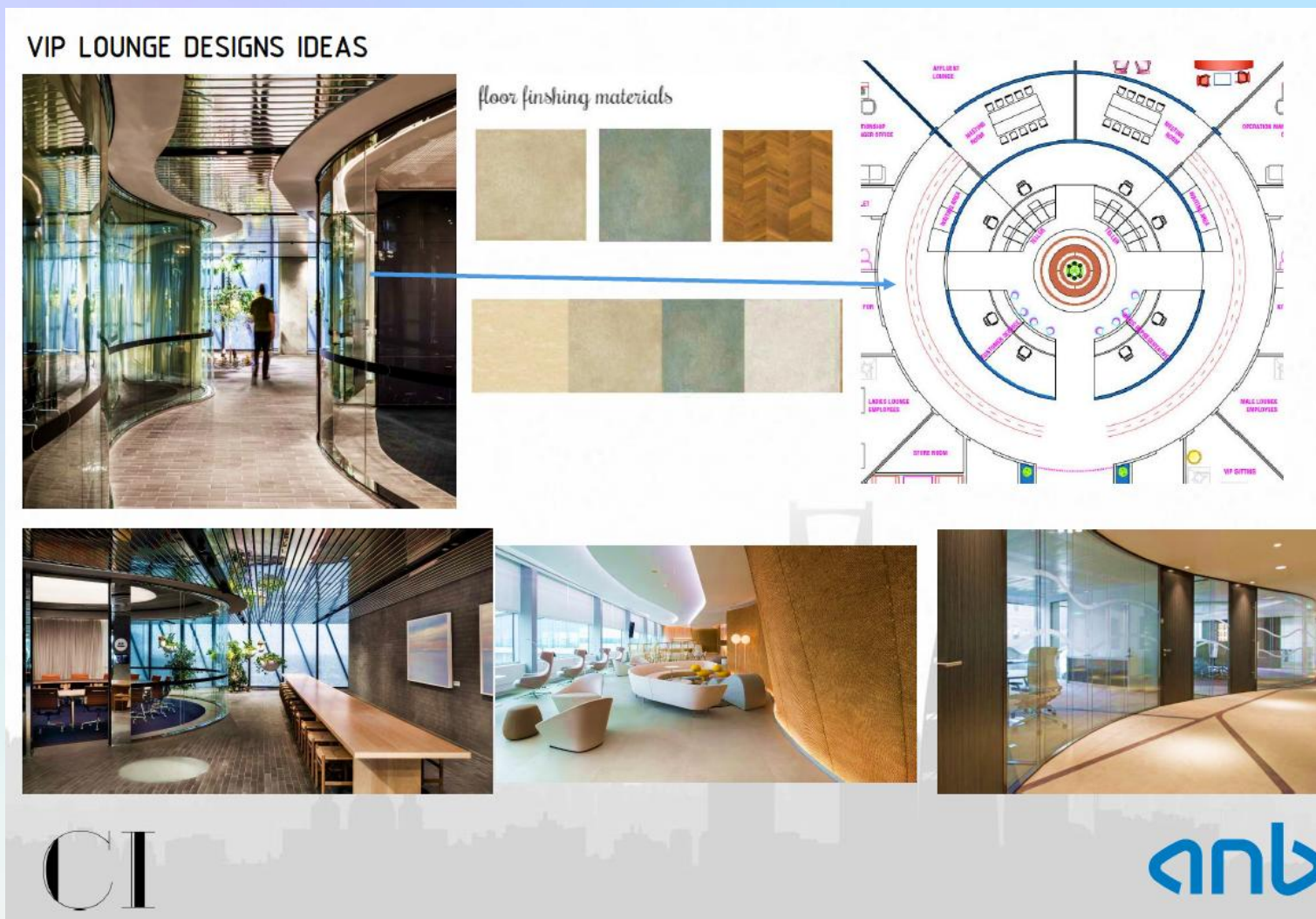


CI FUTURISTIC CONCEPT DESIGNS

COFFEE BAR DESIGNS IDEAS



CI FUTURISTIC CONCEPT DESIGNS



CI FUTURISTIC CONCEPT DESIGNS

MEETING ROOM DESIGNS IDEAS

The collage presents various futuristic meeting room design concepts. At the top left, a photograph shows a curved glass corridor with a polished floor and potted plants. To its right, a section titled 'floor finishing materials' displays two rows of material samples: the top row has three swatches (light grey, dark grey, and wood-grain), and the bottom row has four swatches (light beige, medium grey, dark grey, and light grey). A blue arrow points from the wood-grain sample to a circular floor plan on the right. The floor plan is a circular layout with a central core and several surrounding rooms, including 'EXHIBIT LOUNGE', 'RELATIONSHIP MANAGER OFFICE', 'FEMALE TOILET', 'KITCHEN FOR FEMALE', 'LADIES LOUNGE EMPLOYEES', 'STUDIO ROOM', 'MALE LOUNGE EMPLOYEES', 'MALE TOILET', 'KITCHEN FOR MALE', 'OPERATION MANAGER OFFICE', and 'SEARCH MANAGER OFFICE'. Below the floor plan are three interior design renderings: a circular meeting room with a patterned rug and white chairs; a lounge area with a long white sofa and a curved wall; and a modern meeting room with glass walls and contemporary furniture. The 'anb' logo is located in the bottom right corner of the collage.

floor finishing materials

CI

anb



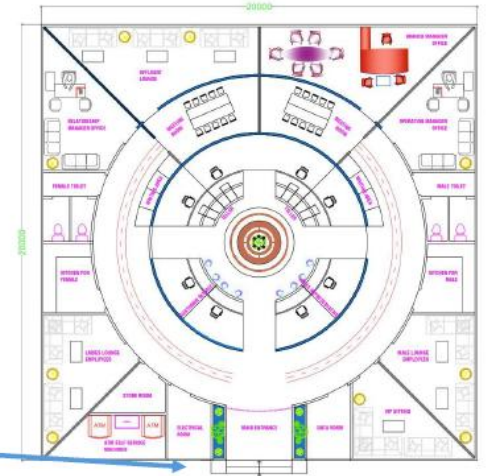
CI FUTURISTIC CONCEPT DESIGNS

TELLER & SALES OFFICES DESIGNS IDEAS

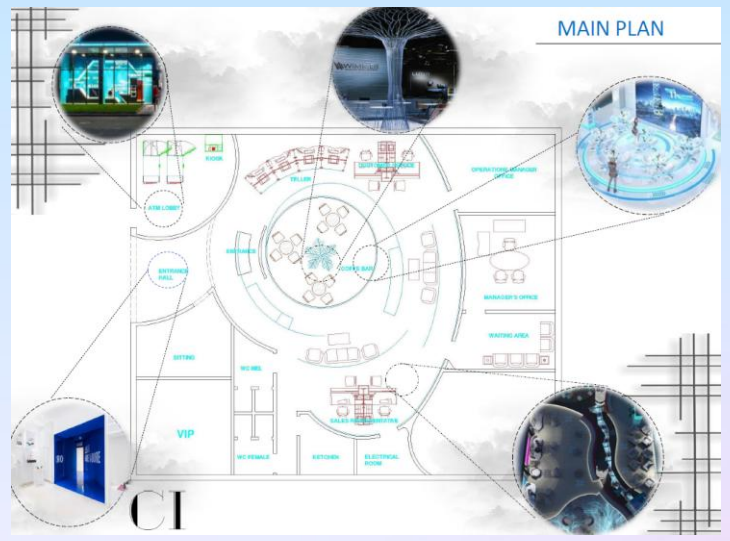


CI FUTURISTIC CONCEPT DESIGNS

ELEVATION DESIGN IDEAS



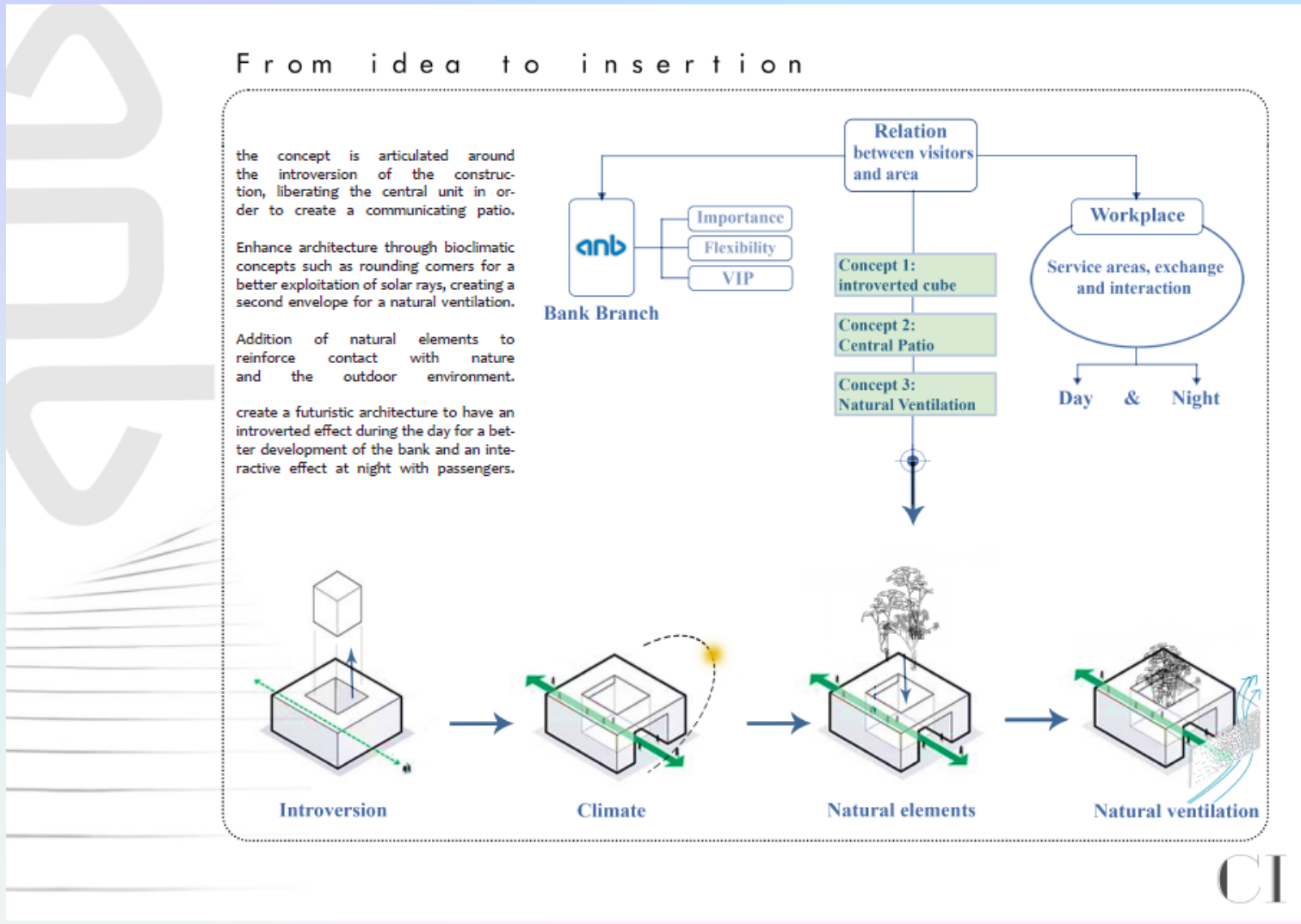
CI FUTURISTIC CONCEPT DESIGNS



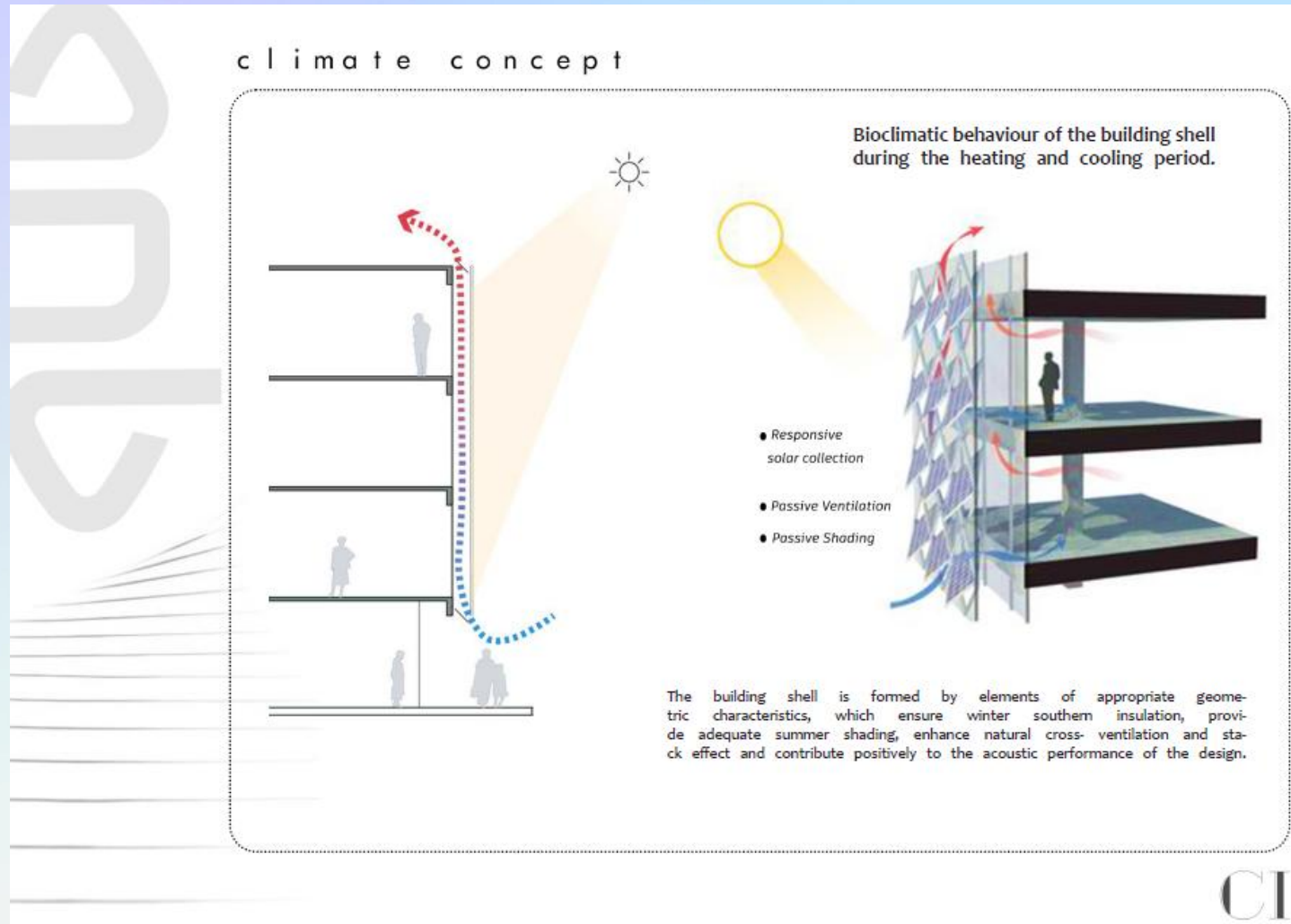
CI FUTURISTIC CONCEPT DESIGNS



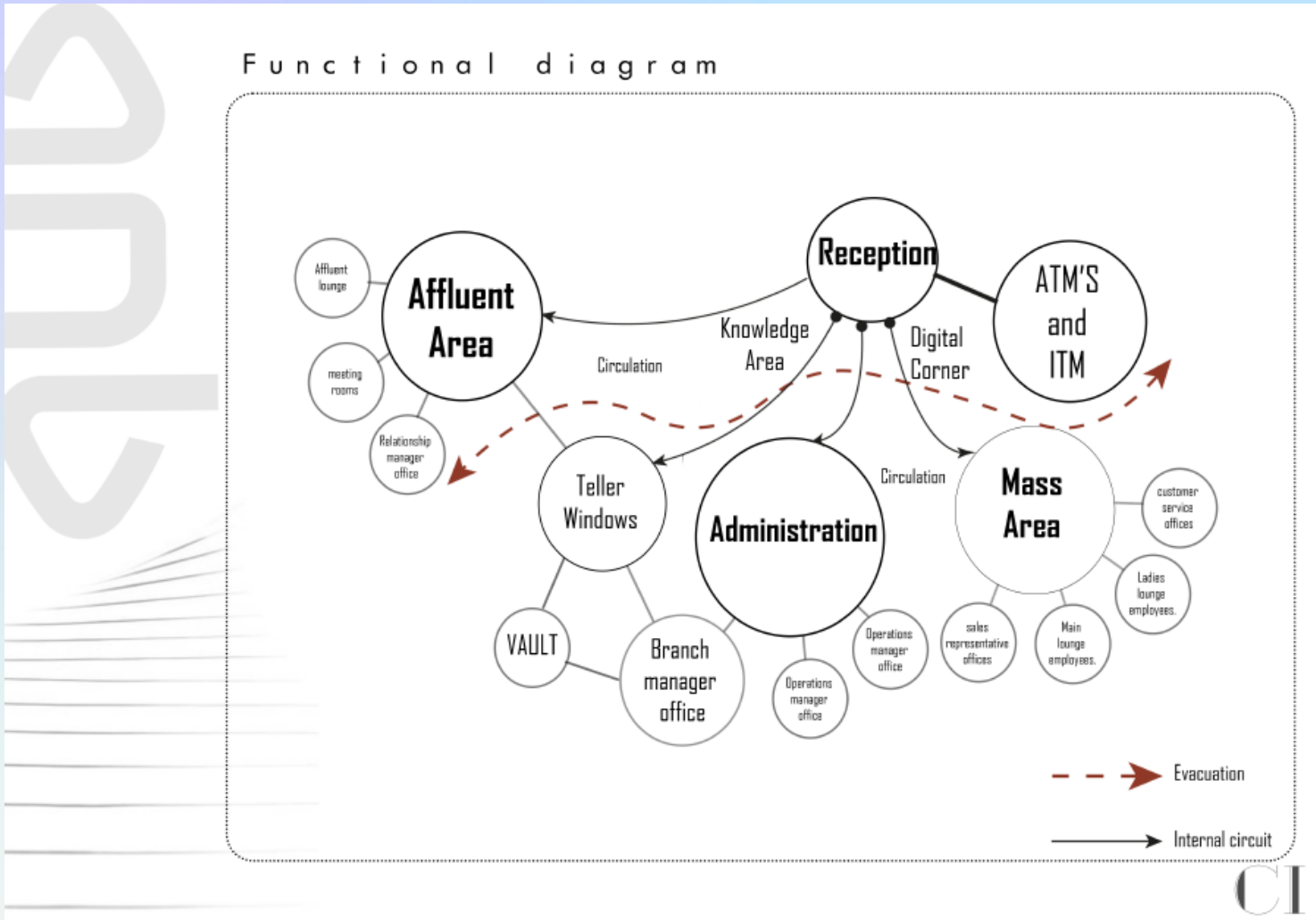
CI FUTURISTIC CONCEPT DESIGNS



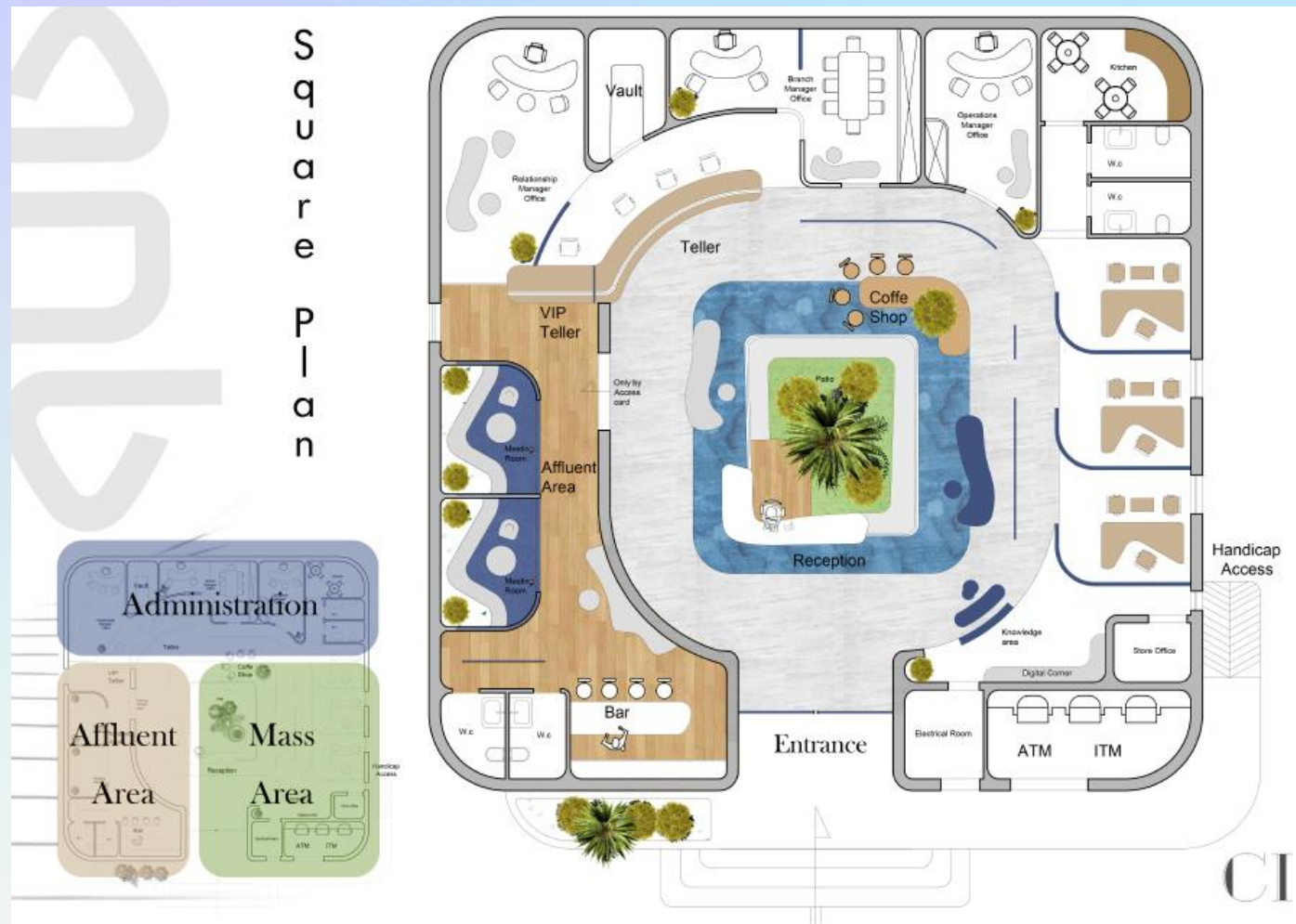
CI FUTURISTIC CONCEPT DESIGNS



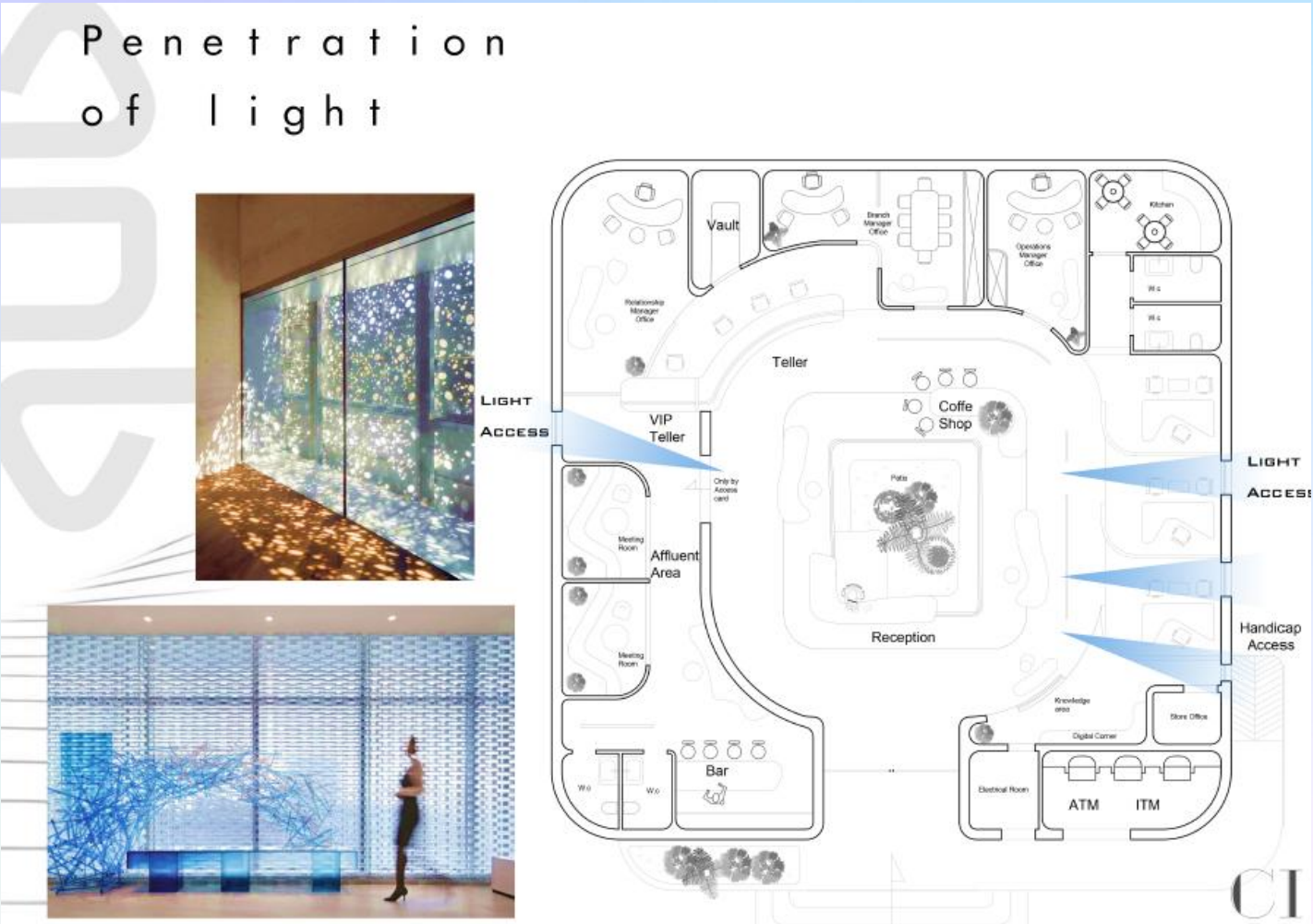
CI FUTURISTIC CONCEPT DESIGNS



CI FUTURISTIC CONCEPT DESIGNS



CI FUTURISTIC CONCEPT DESIGNS



CI FUTURISTIC CONCEPT DESIGNS



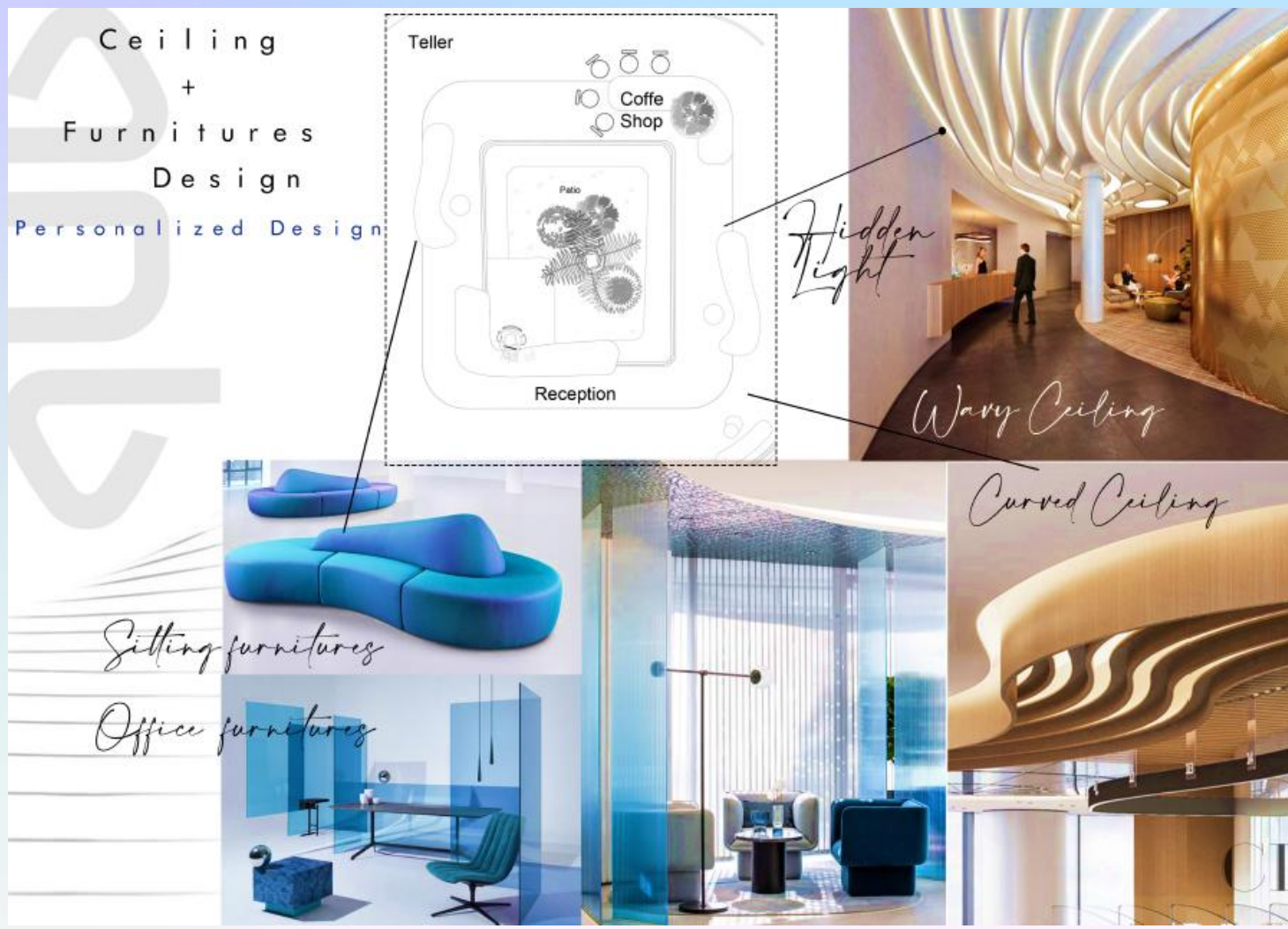
CI FUTURISTIC CONCEPT DESIGNS



CI FUTURISTIC CONCEPT DESIGNS



CI FUTURISTIC CONCEPT DESIGNS



CI FUTURISTIC CONCEPT DESIGNS



CI FUTURISTIC CONCEPT DESIGNS



CI FUTURISTIC CONCEPT DESIGNS



CI QUALITY POLICY

CI



CUSTOMER NEEDS

- ❖ Indicating that products will meet customer needs. The principle that services will "delight consumers" or "be affordable, safe and reliable"



Customer Preferences

- ❖ Indicating that products will be designed to customer requirements, be customizable or be offered in variety designed to suit customer preferences

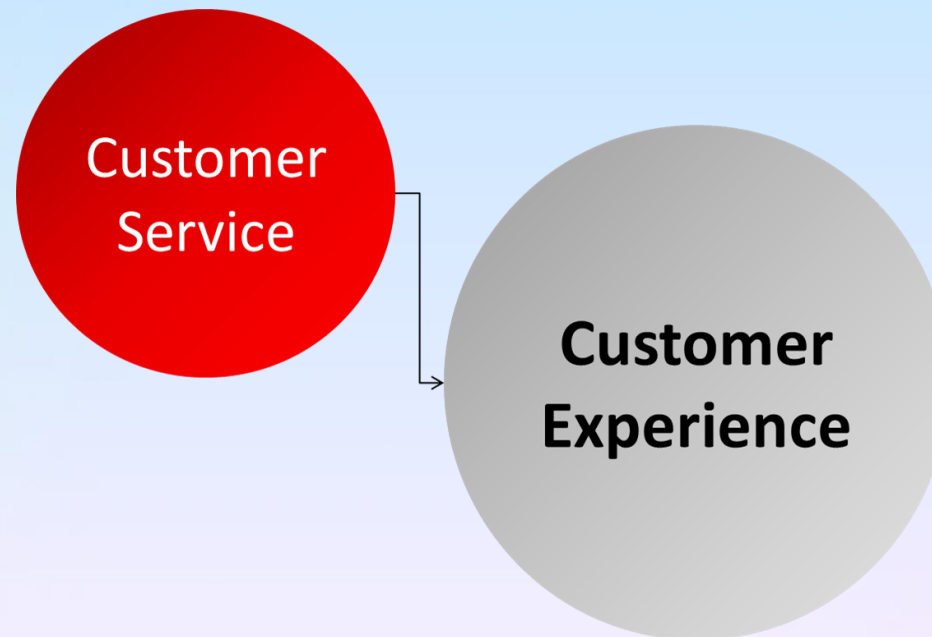


SERVICE & EXPERIENCE

- ❖ A customer service and/or customer experience principle

Listening

- ❖ A commitment to listen to the customer and use their input to improve quality



COMPLIANCE



- ❖ Compliance to interior design – fit out regulations and standards

Health & Safety

- ❖ Committing to a safe product & service



DEFECTS

- ❖ A commitment to work towards zero defects in products and services

Accuracy

- ❖ Accuracy beyond zero defects such as accurate product descriptions. Principle of honesty and directness is applied



TESTING

- Every item is tested before it gets out the door



Waste

- A commitment to work towards zero waste



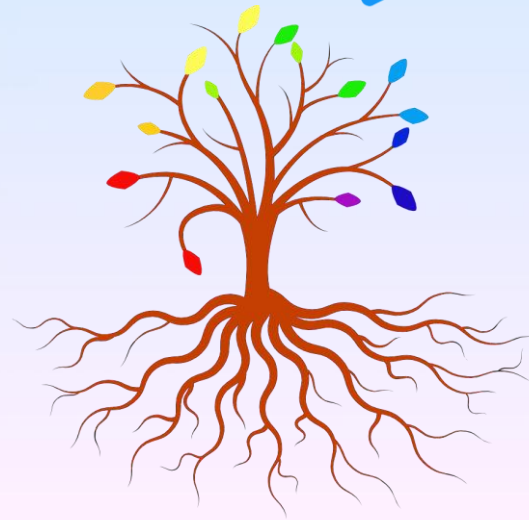
IMPROVEMENT

- ❖ The principle that CI team and services are continually improving



Industry Specific

- ❖ At CI, we seek transcendence in every project we are working on



PEOPLE

- ❖ CI 's team apply a commitment to have a positive impact on the communities in which we operate

Privacy

- ❖ We promise our Customers to secure their data and keep it private



ENVIRONMENT

- ❖ A commitment to environmentally responsible products, services and operations



Sourcing

- ❖ The principle that parts, materials and services will be responsibly sourced





CI STATEMENT OF HSE POLICY

- ❖ Prevent accidents and cases of work-related ill health by managing the health and safety risks in the workplace
- ❖ Provide clear instructions and information, and adequate training, to ensure employees are competent to do their work
- ❖ Engage and consult with employees on day-to-day health and safety conditions
- ❖ Updates of the emergency procedures implementation – evacuation in case of fire or other significant incident
- ❖ Maintain safe and healthy working conditions, provide and maintain plant, equipment, and machinery, and ensure safe storage/use of substances



CI STATEMENT OF HSE POLICY

- ❖ Staff and subcontractors were given necessary health and safety induction and provided with appropriate training (including working at height, and electrical safety) and personal protective equipment. We will ensure that suitable arrangements are in place to cover our employees who are engaged in work
- ❖ Generally and especially for COVID-19/24 precautions, Staff routinely consulted on health and safety matters as they arise but also formally consulted at regular health and safety performance review meetings or sooner if required
- ❖ Lavatories, washing facilities, and drinking water provided



CI



CONTACT CI

Riyadh | Paris | London | New York | Bogotá

24/7



+1 202 524 1794

INFO@CI.DESIGN



+1 202 524 1794



CI



CONTACT CI

HIQ
HEADQUARTERS
HIQ

99 WALL STREET #3545
NEW YORK, NY 10005 USA
+1 202 524 1794



CI MEDIA

CI

TAP
ME

♥ Please follow us for our latest news in the world of Interior Design Art & Tech



CI

THANK YOU



CI

ALWAYS

TRUST
CI
WILL ACHIEVE
YOUR THOUGHTS



Ci.Design © 2025

